



Face-Off Locations



*An explanation and quiz about the application
of rules that determine face-off locations.*



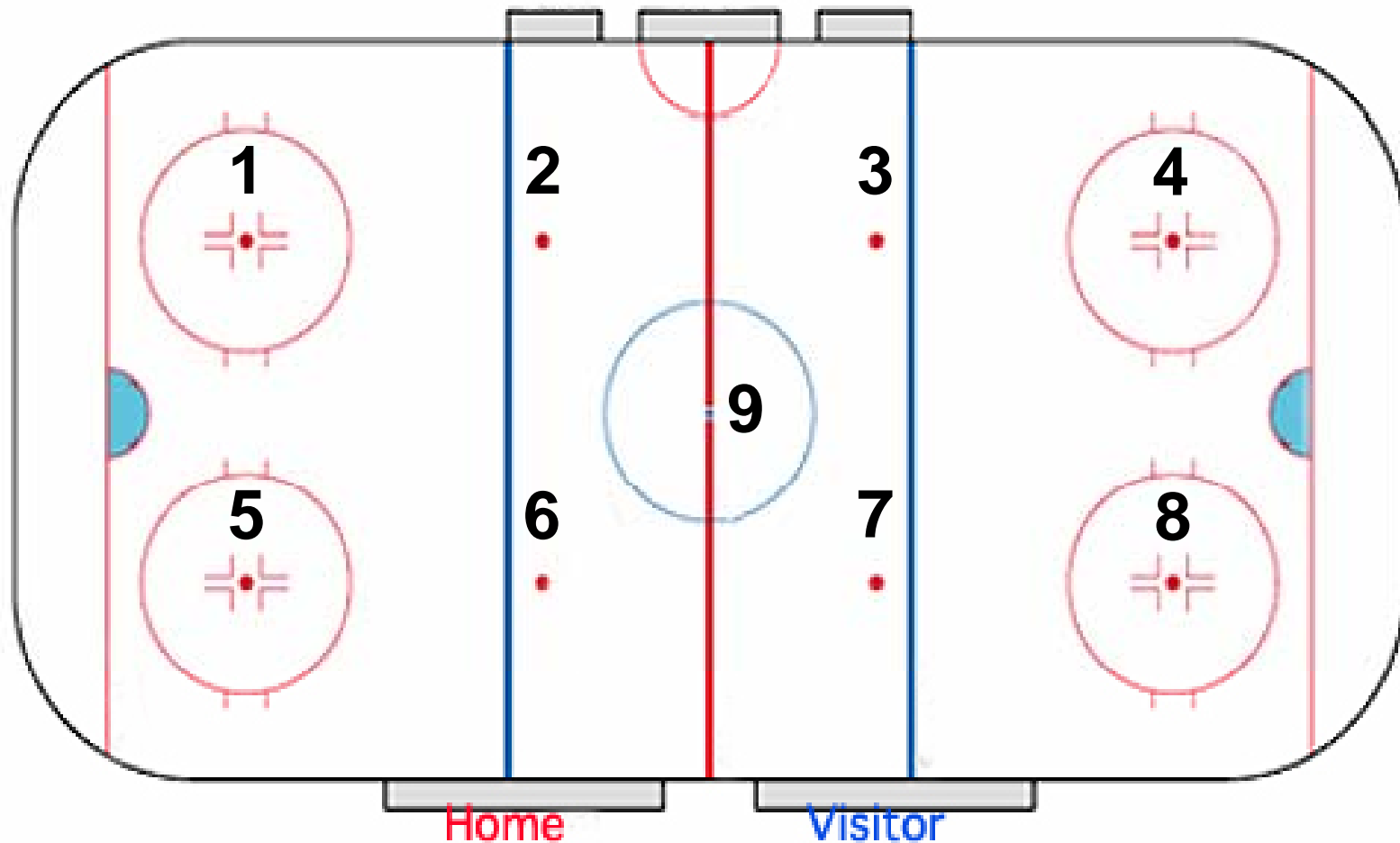
Face-Off Locations

Face-offs shall only occur at one of the 9 face-off dots.

Rule 10.2 refers.

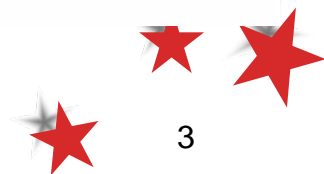


Face-Off Locations – 9 Possibilities Only!



Reference: Rule 10.2 (g) – Referee's Case Book p126

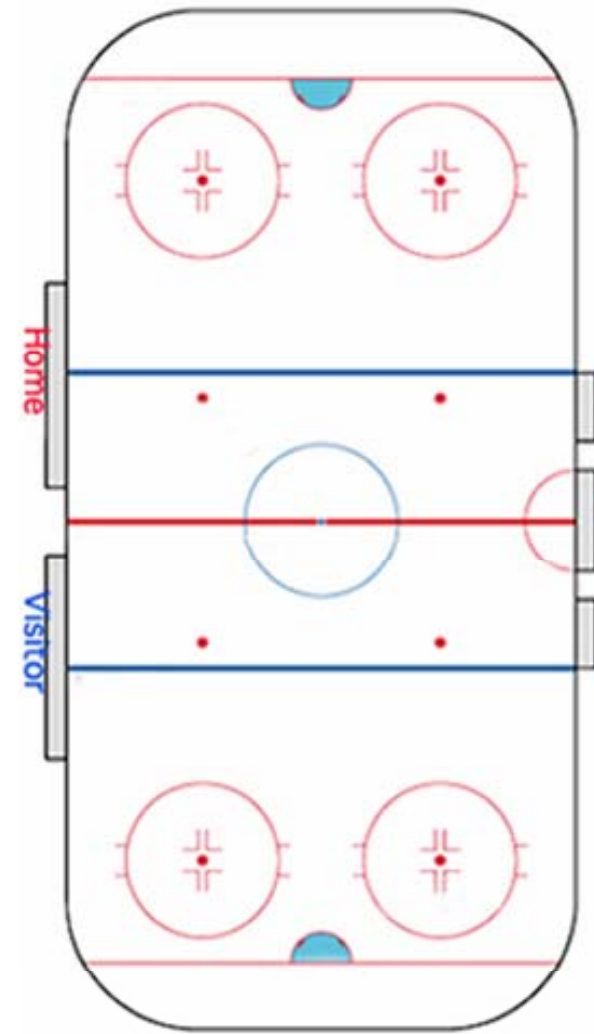
Face-off Locations 1st Edition 2010



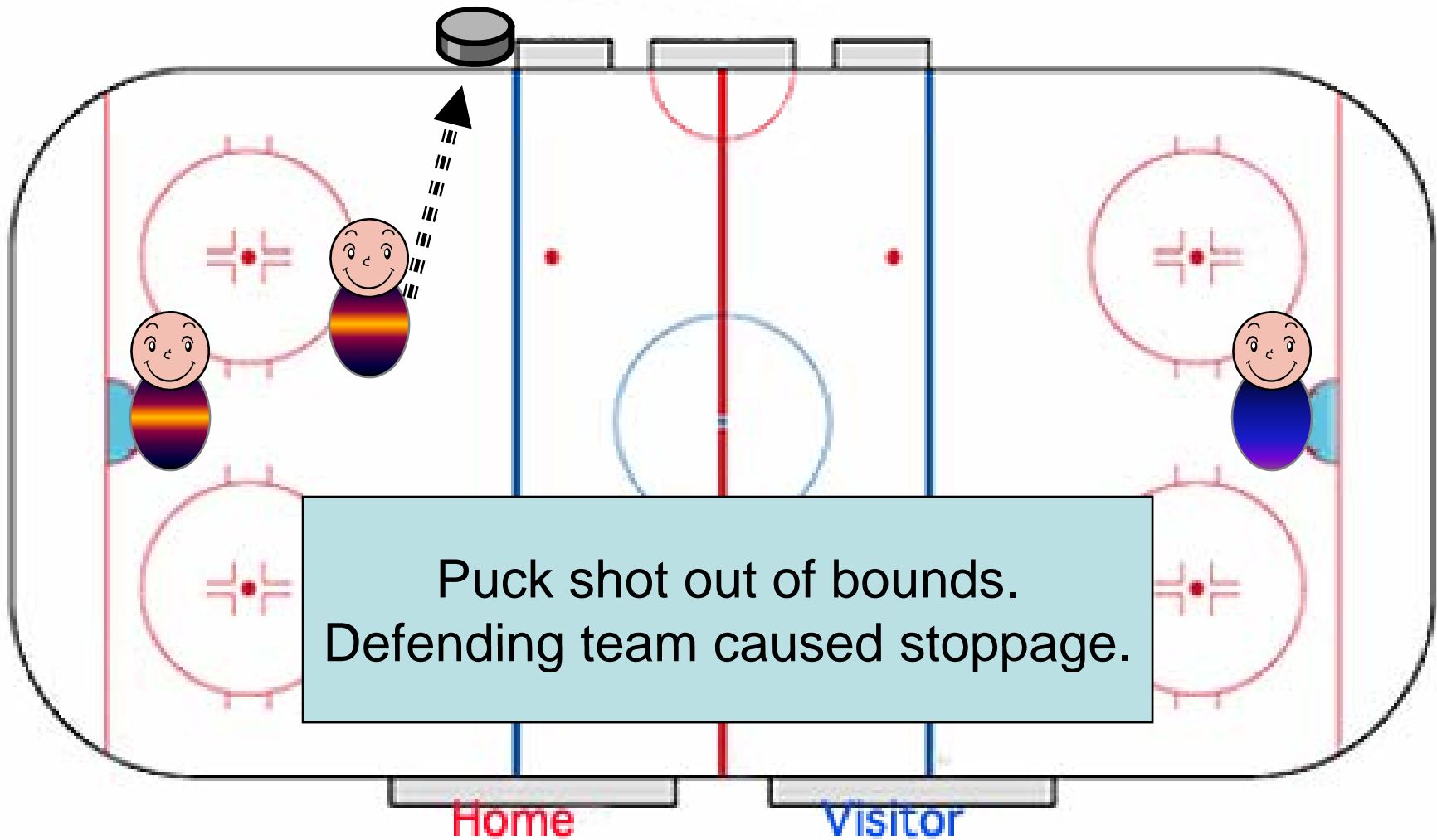
Face-Off Locations

When a **defending** player causes a stoppage of play while the puck is in that player's **defending** zone the face-off shall occur at the nearest **end zone** face-off spot (unless otherwise covered in the rules).

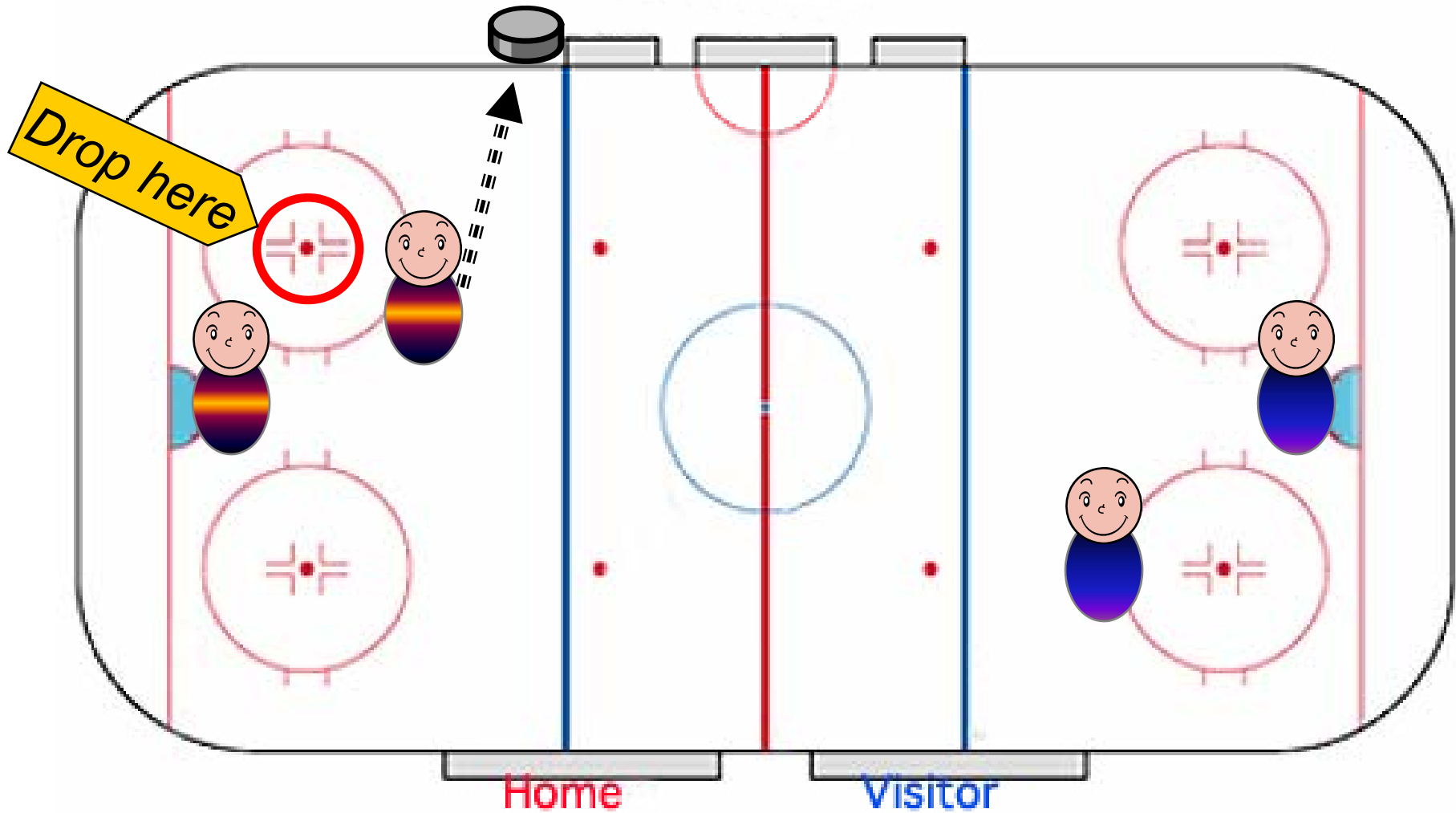
Reference: Rule 10.2 (h) – Referee's Case Book p126.



Face-Off Locations



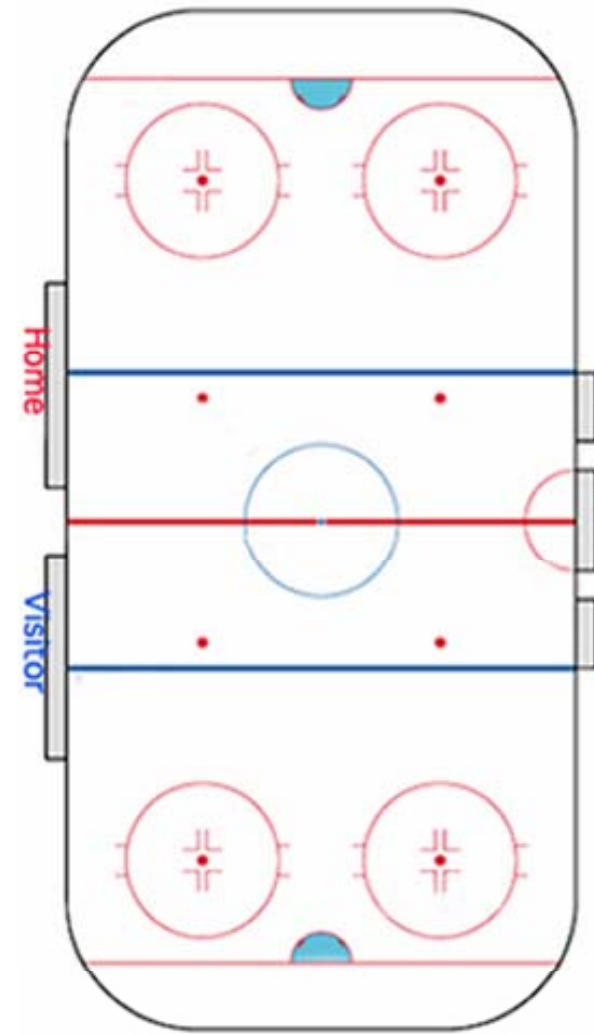
Face-Off Locations



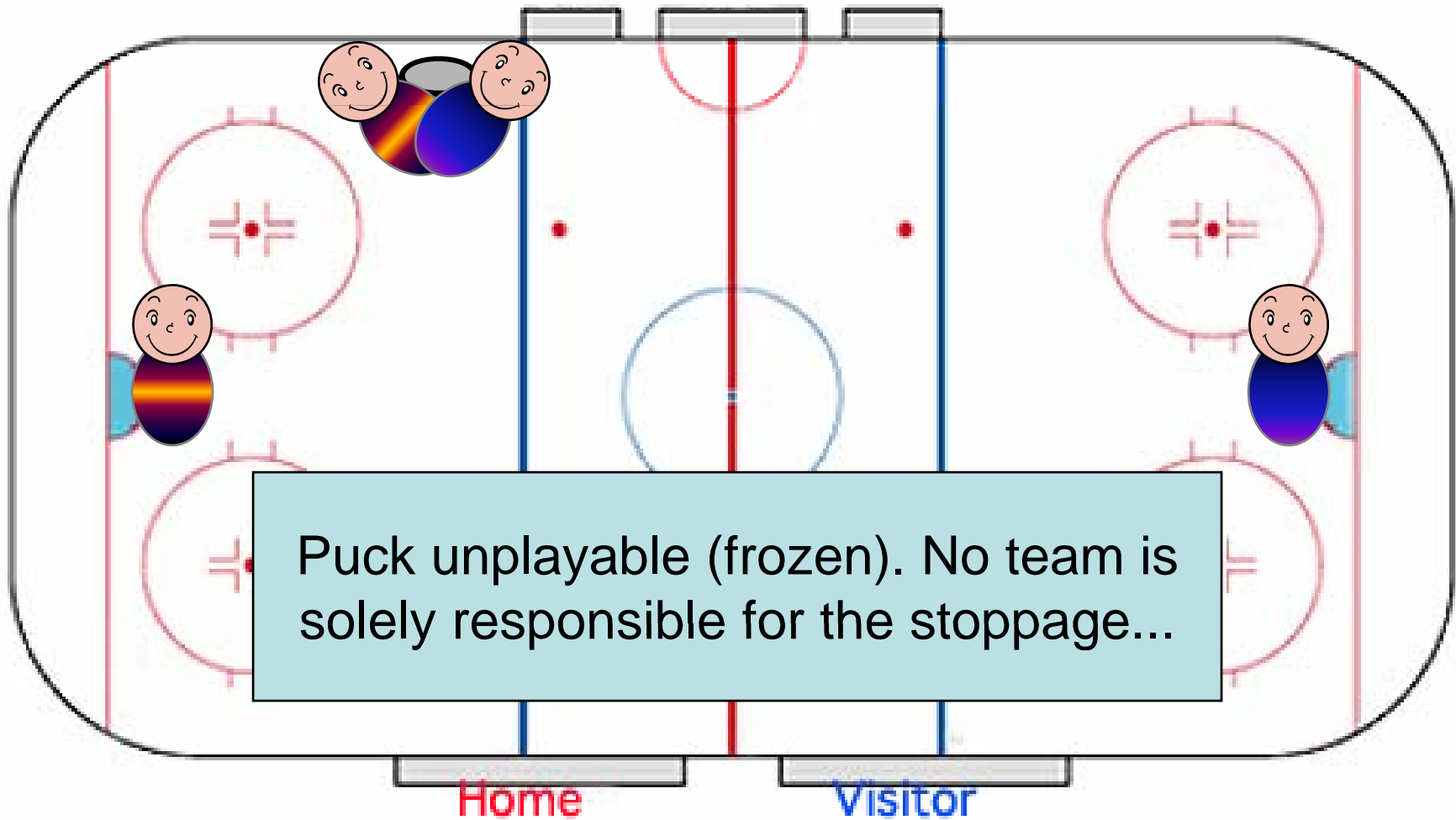
Face-Off Locations

When play is stopped in an **end** zone and neither team is solely responsible for the stoppage the face-off shall occur at the nearest **end** zone face-off spot (unless otherwise covered in the rules).

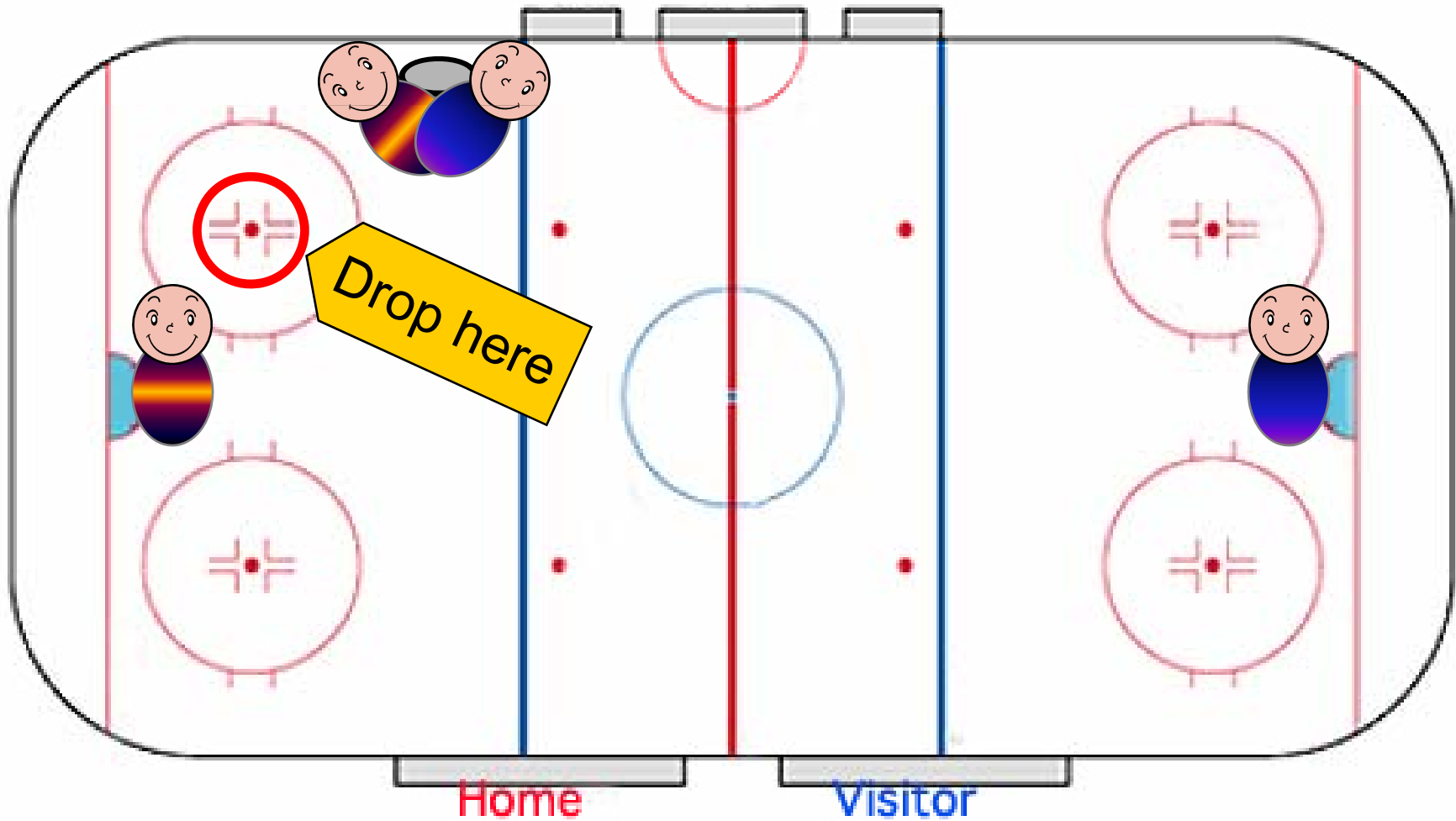
References: Rule 10.2 (f) – Referee's case Book page 126.



Face-Off Locations



Face-Off Locations



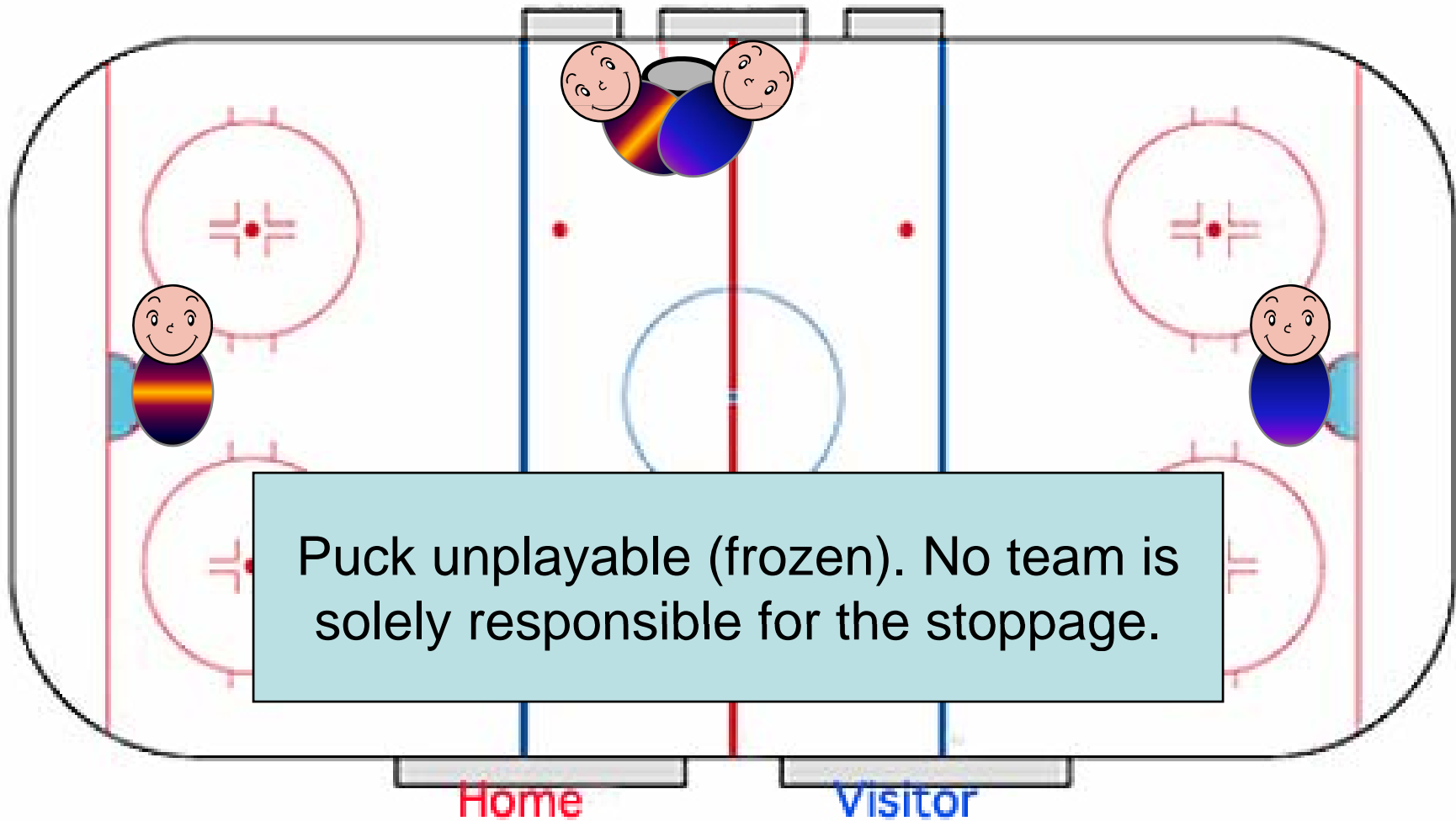
Face-Off Locations

When play is stopped in the **neutral** zone and neither team is solely responsible for the stoppage the face-off shall occur at the nearest **neutral** zone face-off spot (excluding centre ice), unless otherwise covered in the rules.

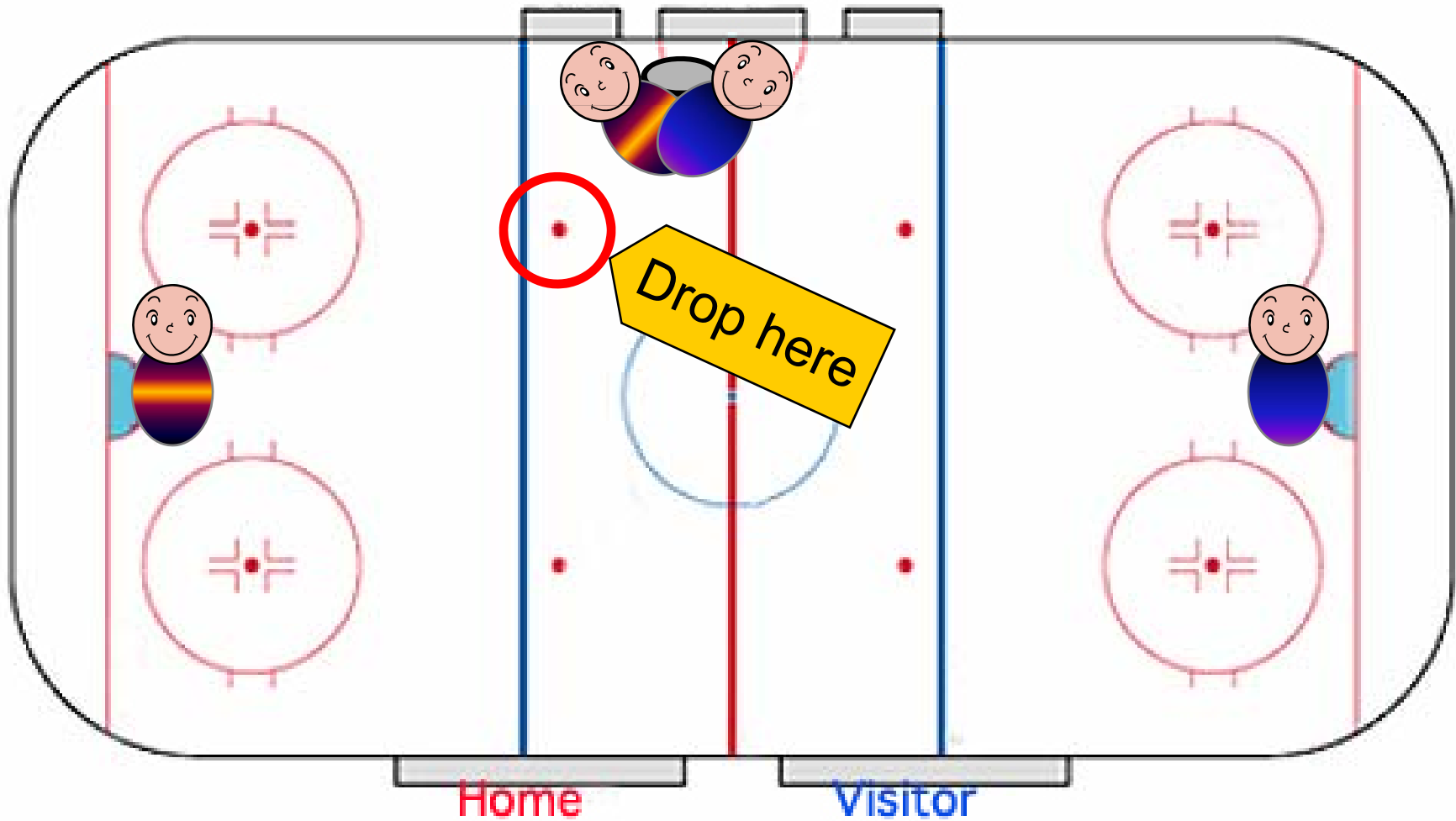
References: Rule 10.2 (g), Referee's Case Book page 126.



Neutral Zone Face-Off Locations



Neutral Zone Face-Off Locations



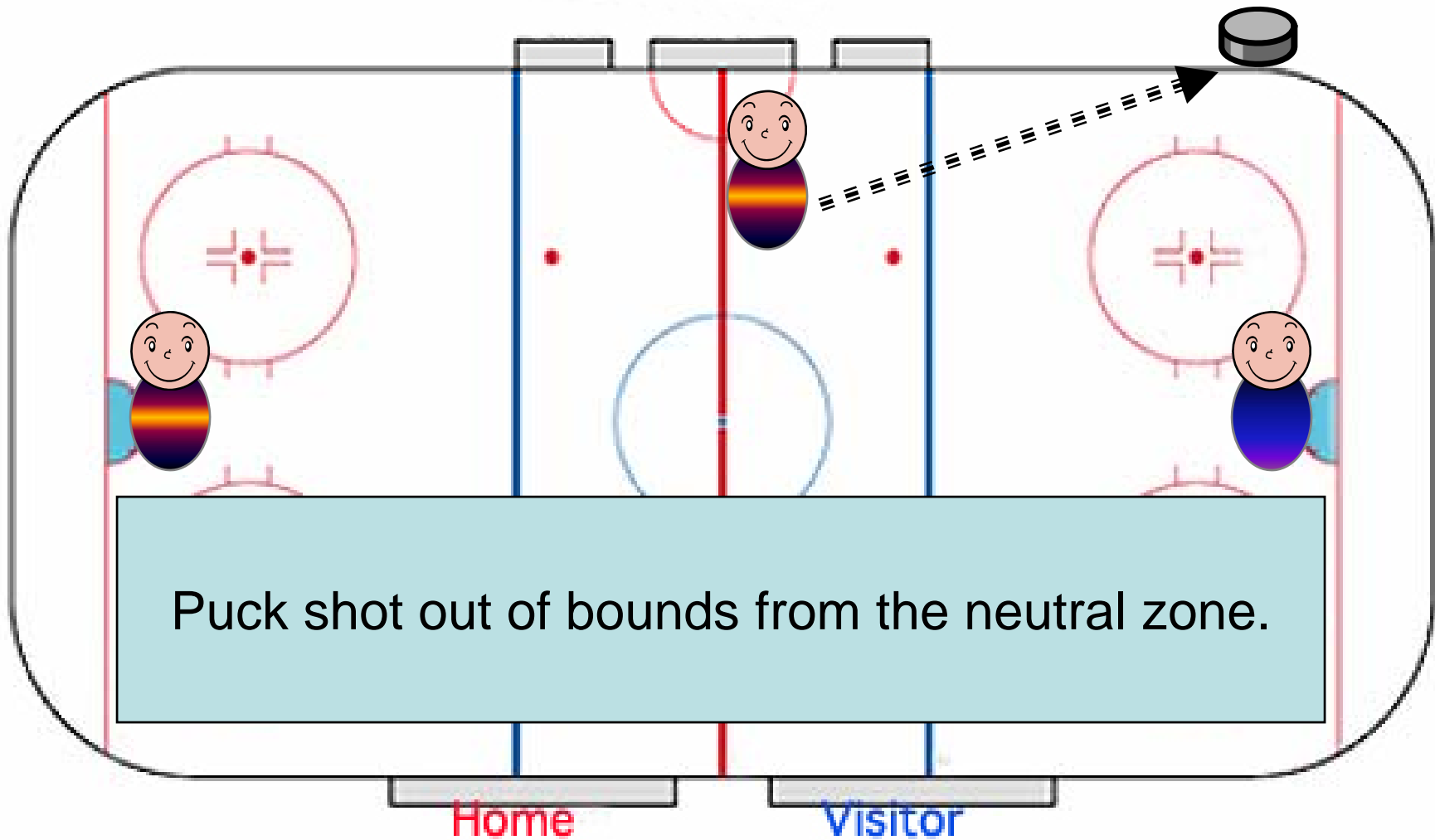
Neutral Zone Face-Off Locations

When **one** team is solely responsible for a stoppage of play while the puck is in the **neutral** zone or because the puck has gone out of bounds from the **neutral** zone, the face-off shall occur at one of the two neutral zone face-off spots near the **offending** team's **defending** blue line.

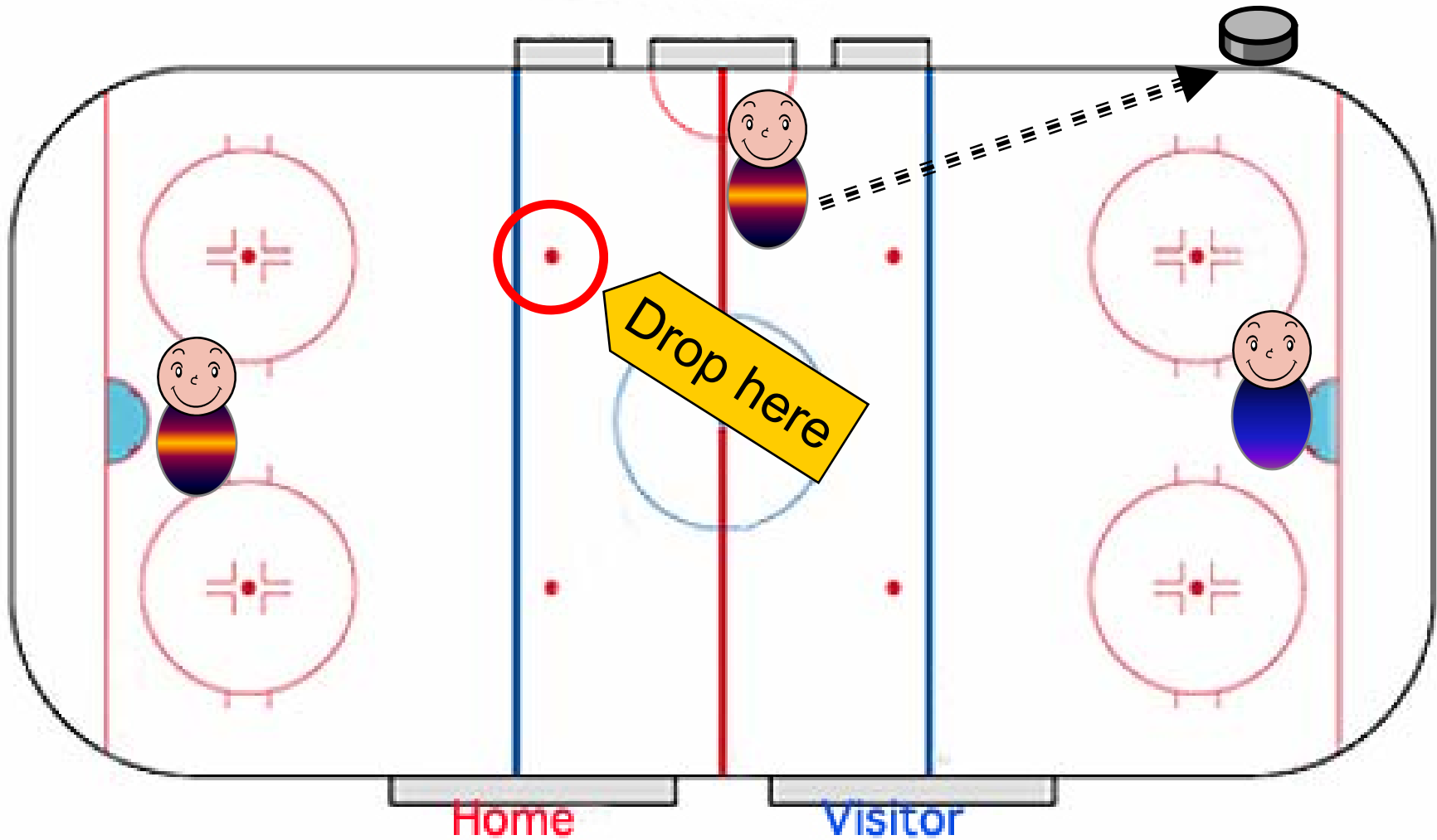
References: Rules 10.2 (f), (g) & (h), Referee's Case Book page 126



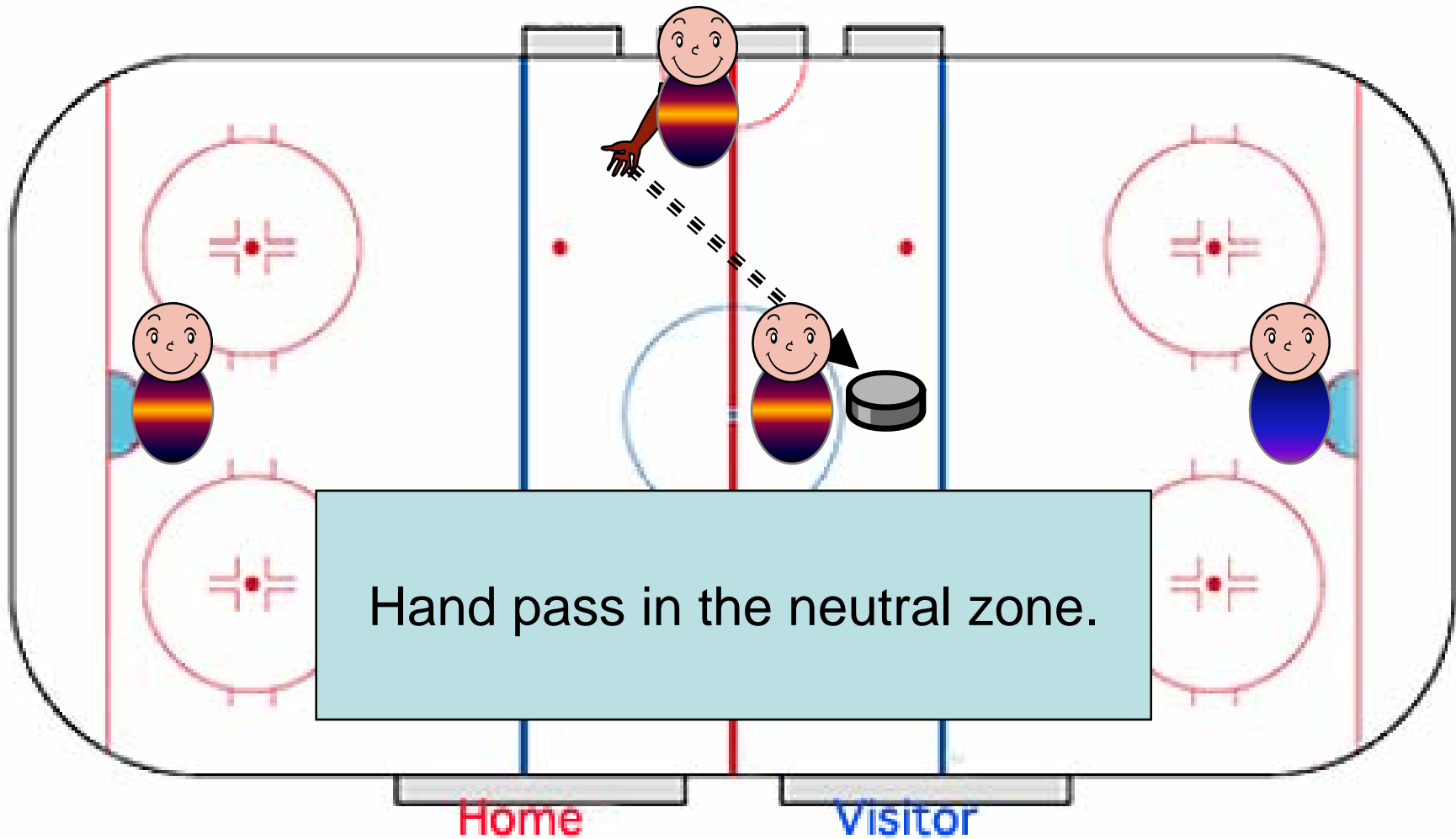
Neutral Zone Face-Off Locations



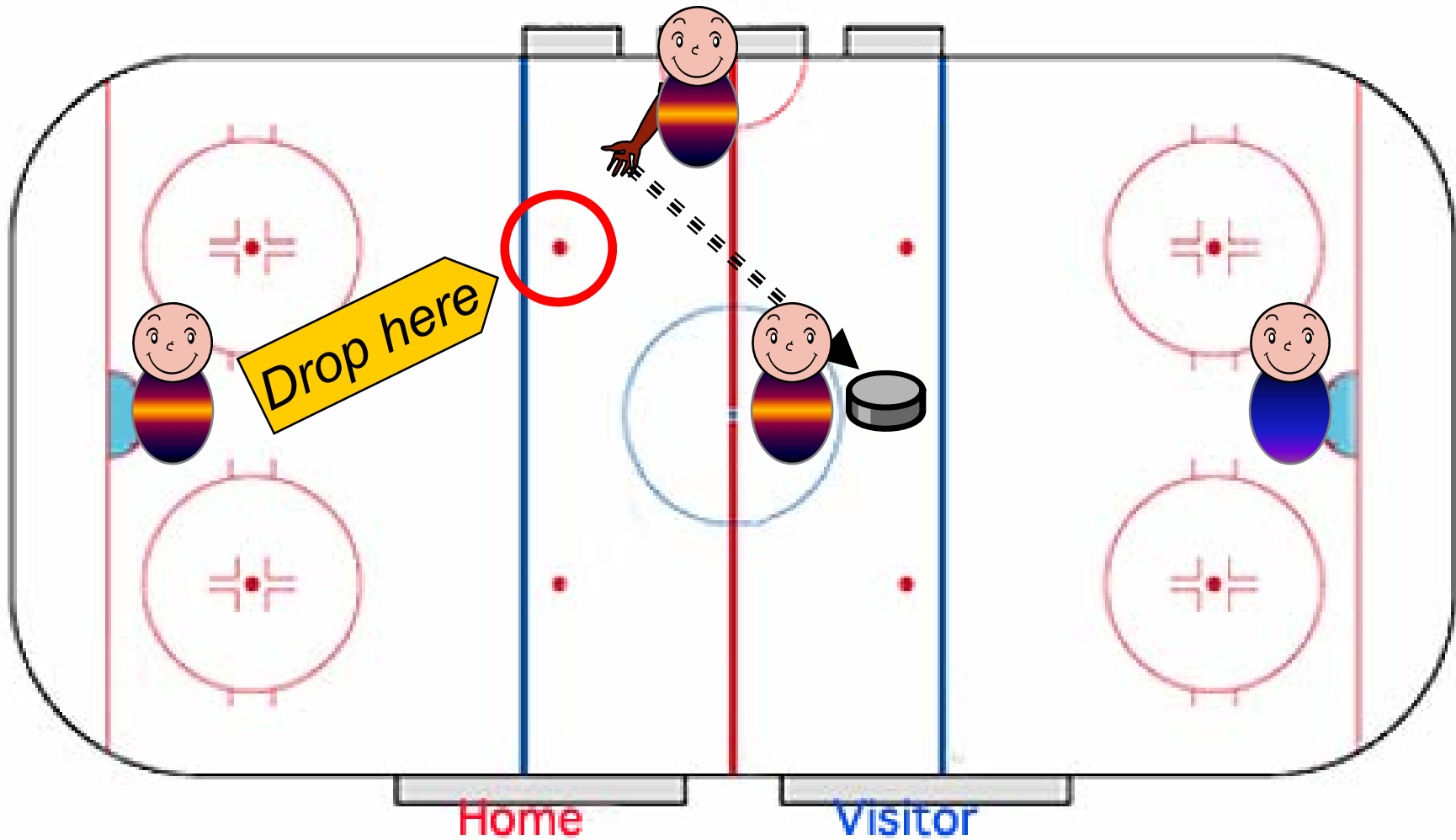
Neutral Zone Face-Off Locations



Neutral Zone Face-Off Locations



Neutral Zone Face-Off Locations





Face-Off Locations



...When Off-Side is Called...

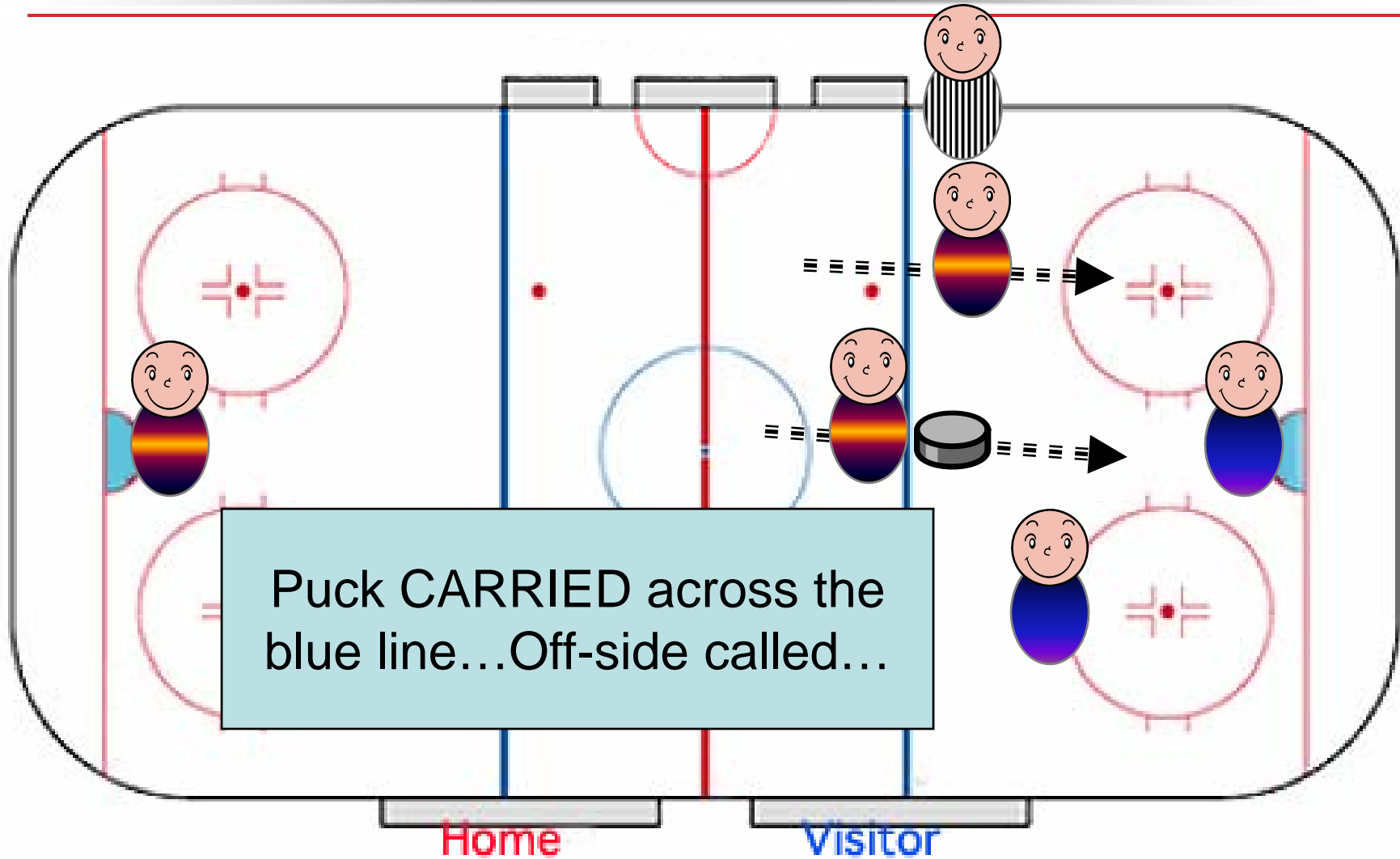


Neutral Zone Face-Off Locations

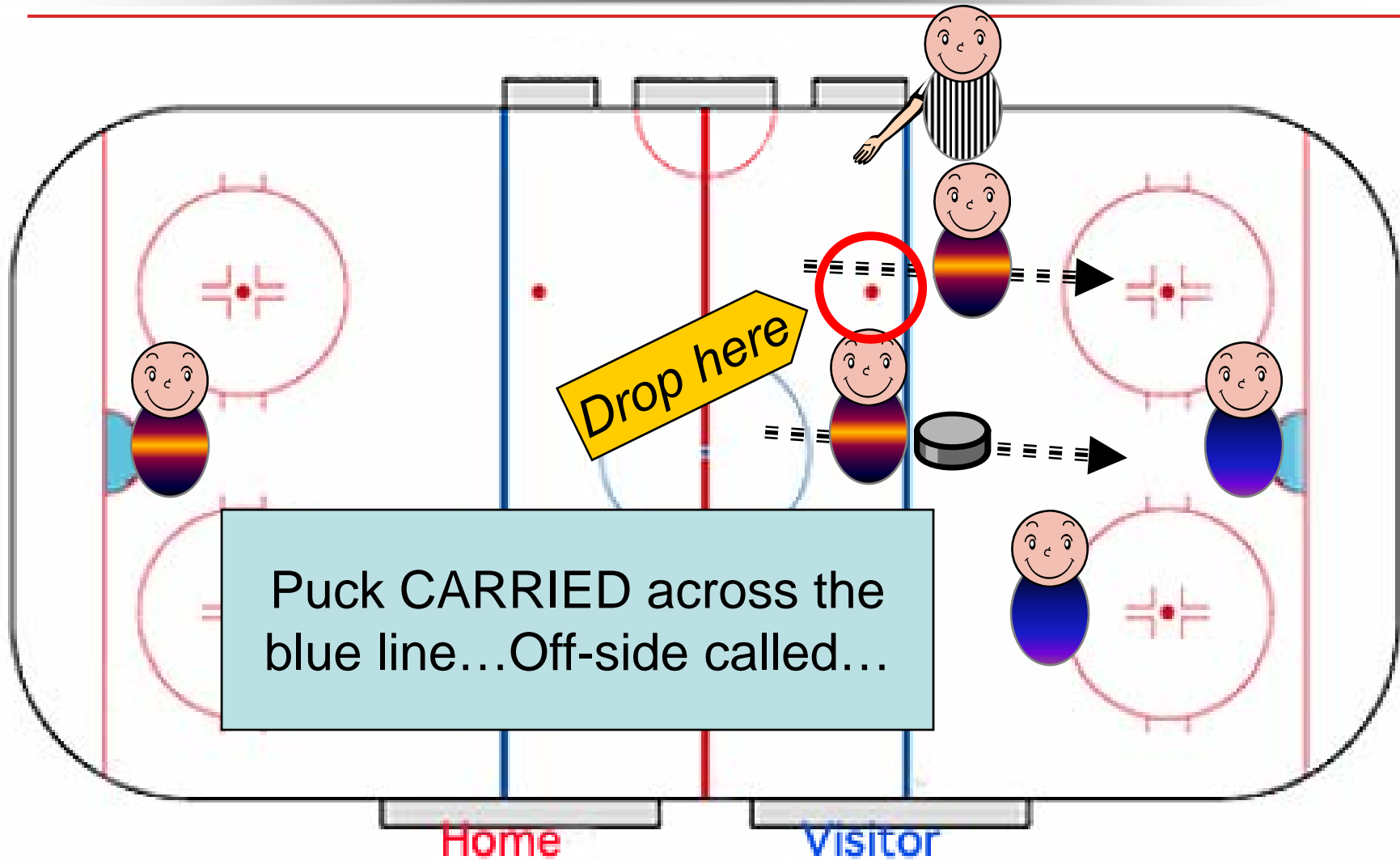
If OFF-SIDE is called when a team **CARRIES** the puck across their attacking blue line, the resulting face-off will take place at the nearest neutral zone face-off spot.



Neutral Zone Face-Off Locations



Neutral Zone Face-Off Locations

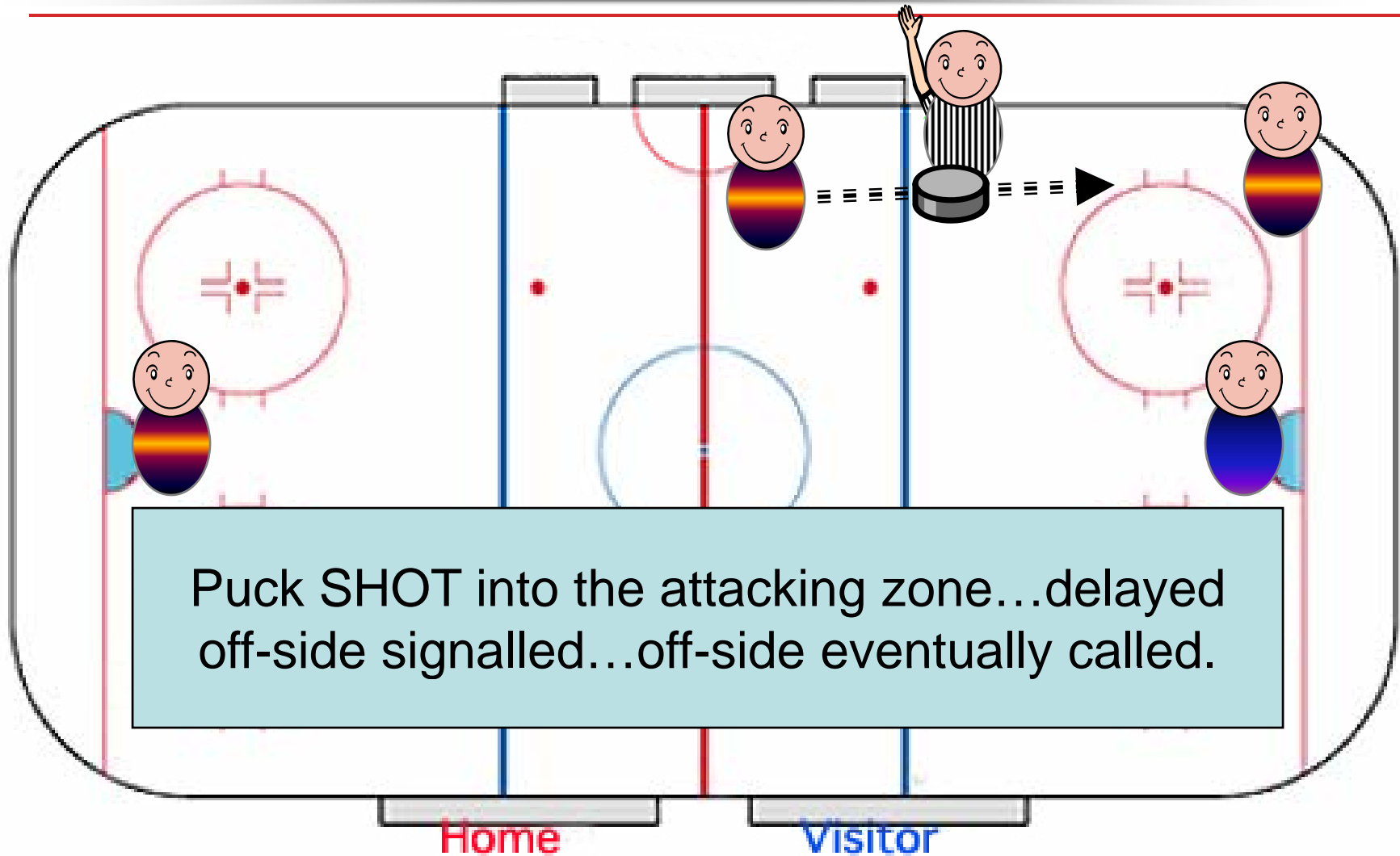


Neutral Zone Face-Off Locations

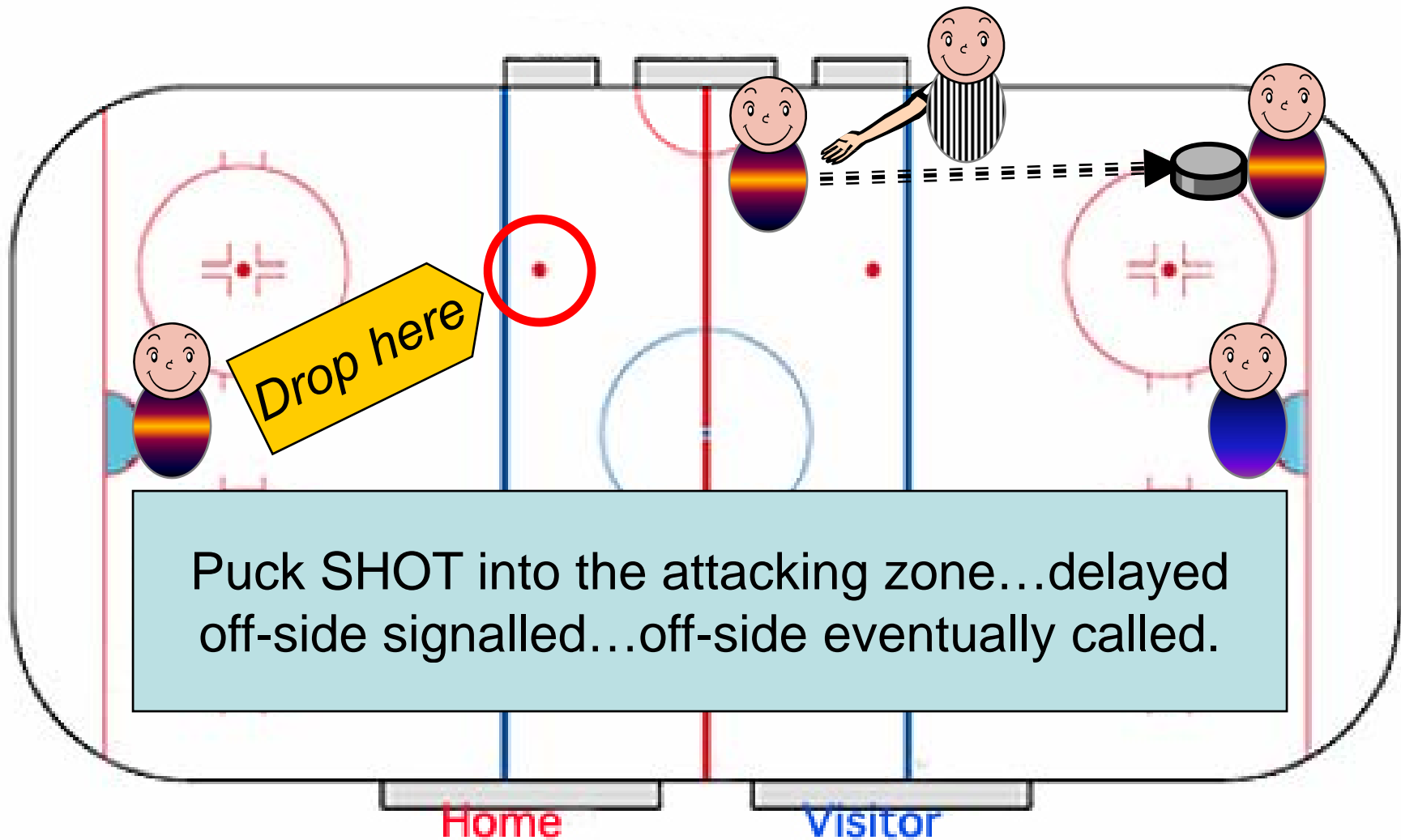
If OFF-SIDE is called when a team SHOOTS or PASSES the puck across their attacking blue line, the resulting face-off will take place at one of the neutral zone face-off spots near the offending team's defending blue line.



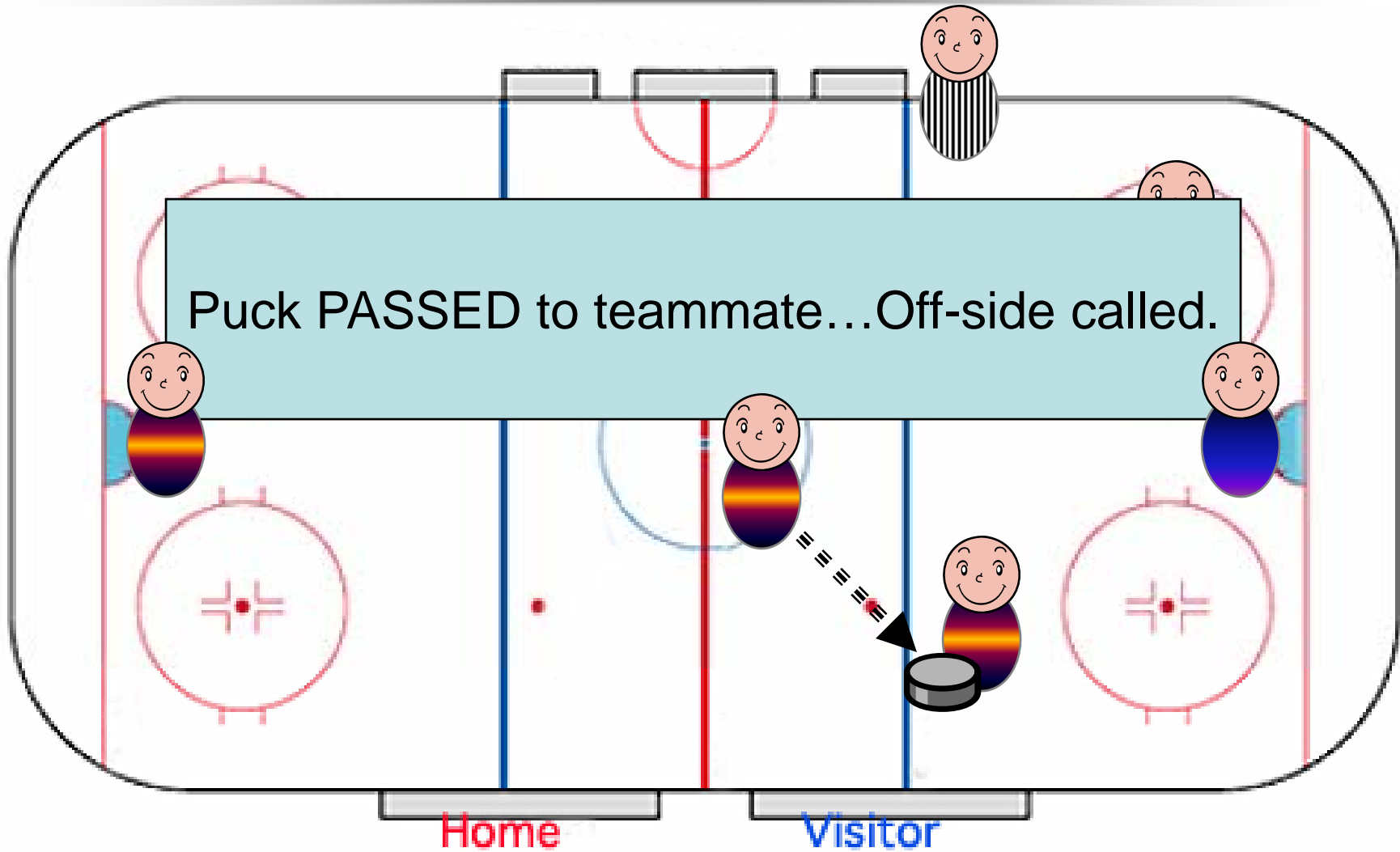
Neutral Zone Face-Off Locations



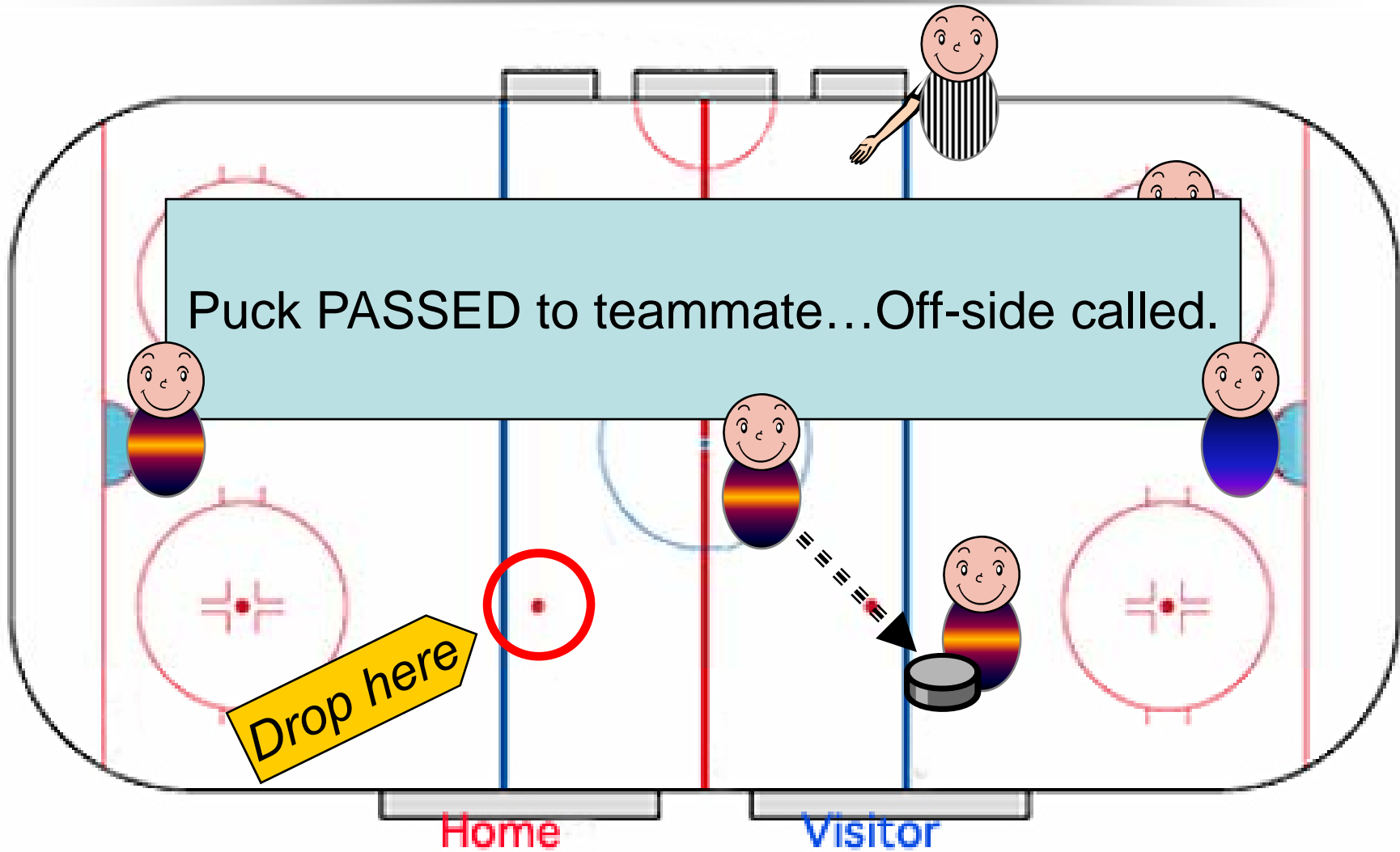
Neutral Zone Face-Off Locations



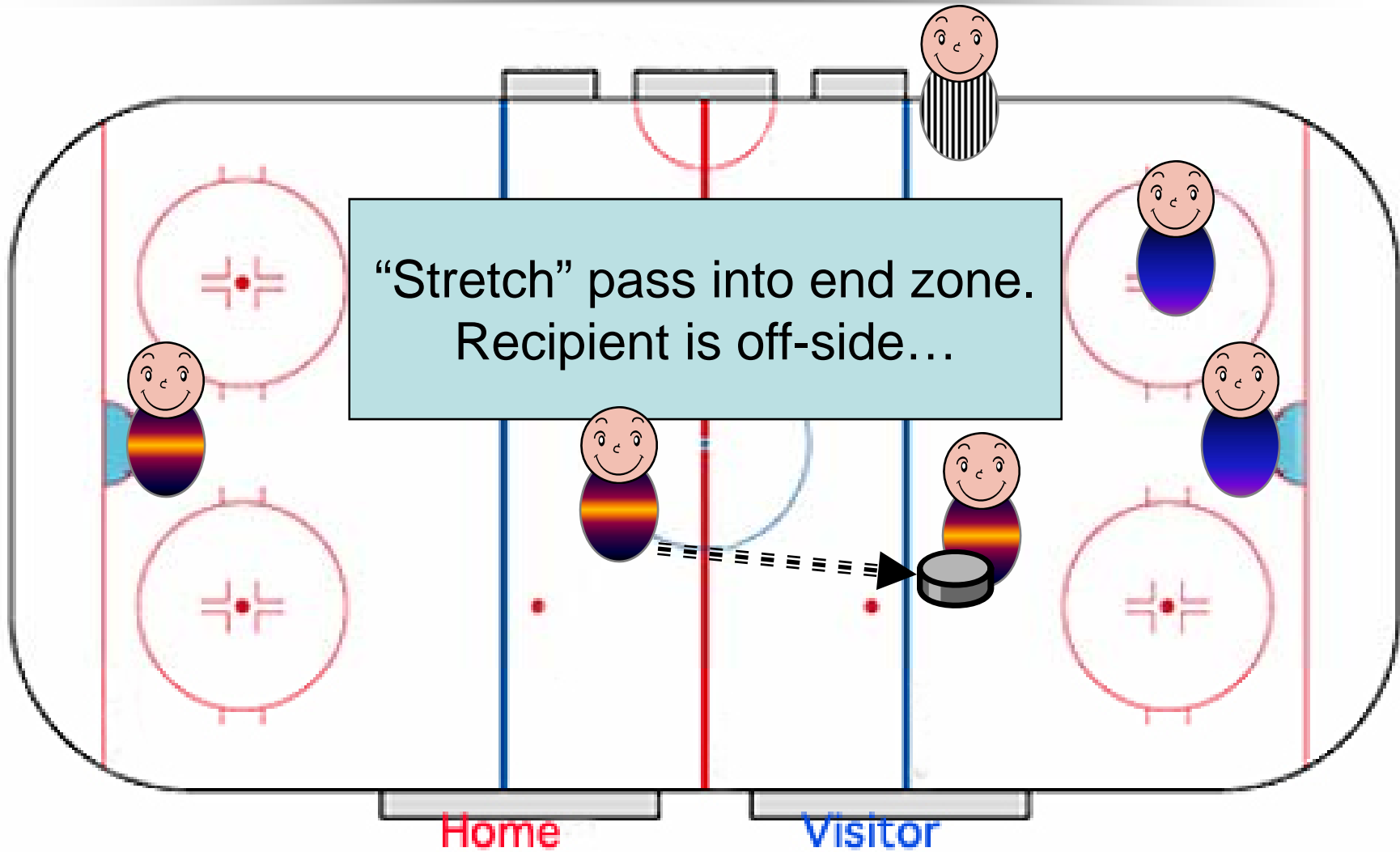
Neutral Zone Face-Off Locations



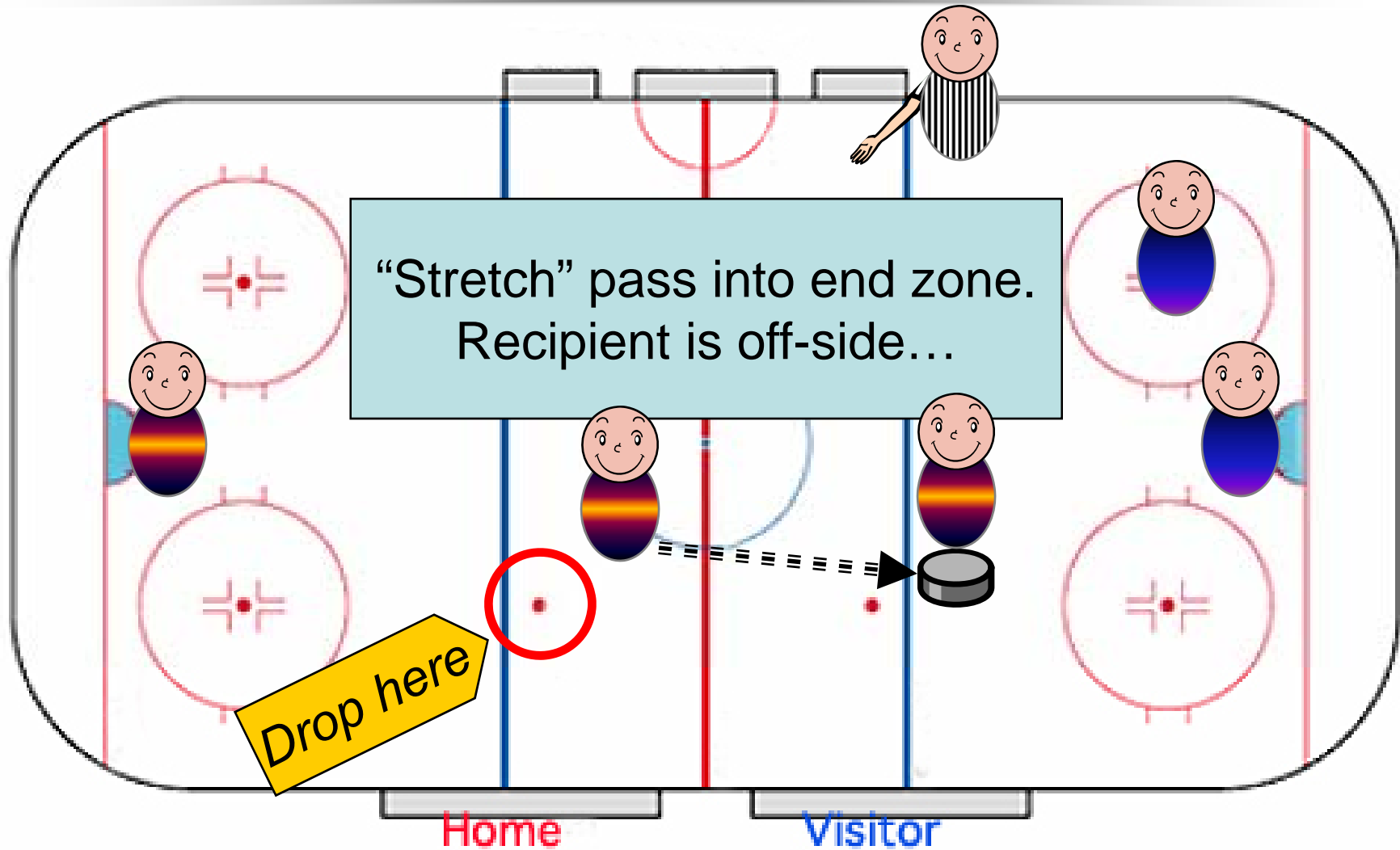
Neutral Zone Face-Off Locations



Neutral Zone Face-Off Locations



Neutral Zone Face-Off Locations



Neutral Zone Face-Off Locations

If OFF-SIDE is called when a team SHOOTS or PASSES the puck across their attacking blue line, the resulting face-off will take place at one of the neutral zone face-off spots near the offending team's defending blue line.

**There is one
Exception!**



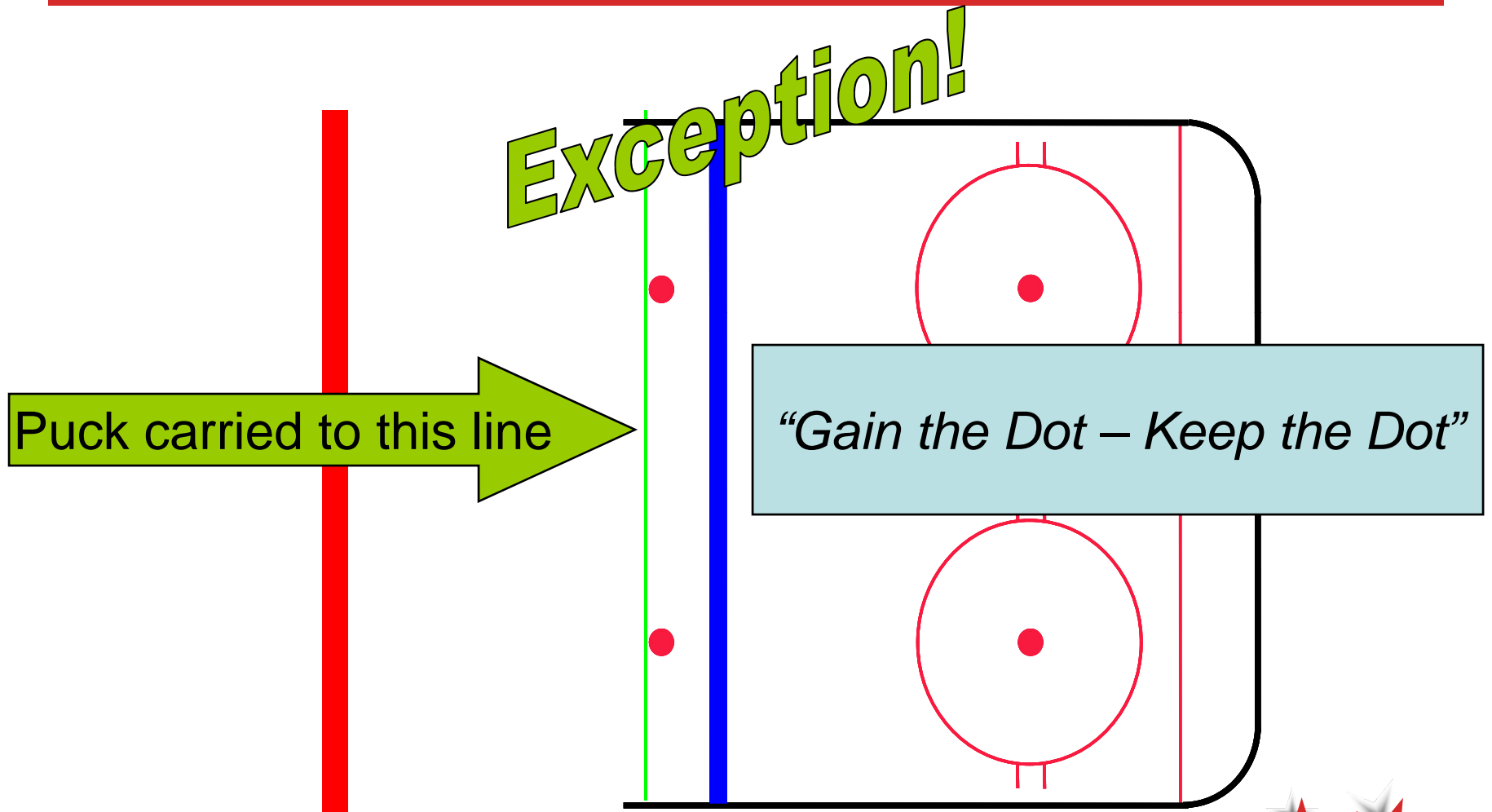
Neutral Zone Face-Off Locations

NEW Interpretation / Exception to the Rule

If off-side occurs due to a pass or shoot-in and the offending team has CARRIED the puck to or beyond the neutral zone face-off dots adjacent to their attacking blue line before making the pass or shoot-in, then the ensuing face-off occurs at one of the neutral zone face-off dots nearest to the offending team's attacking blue line.

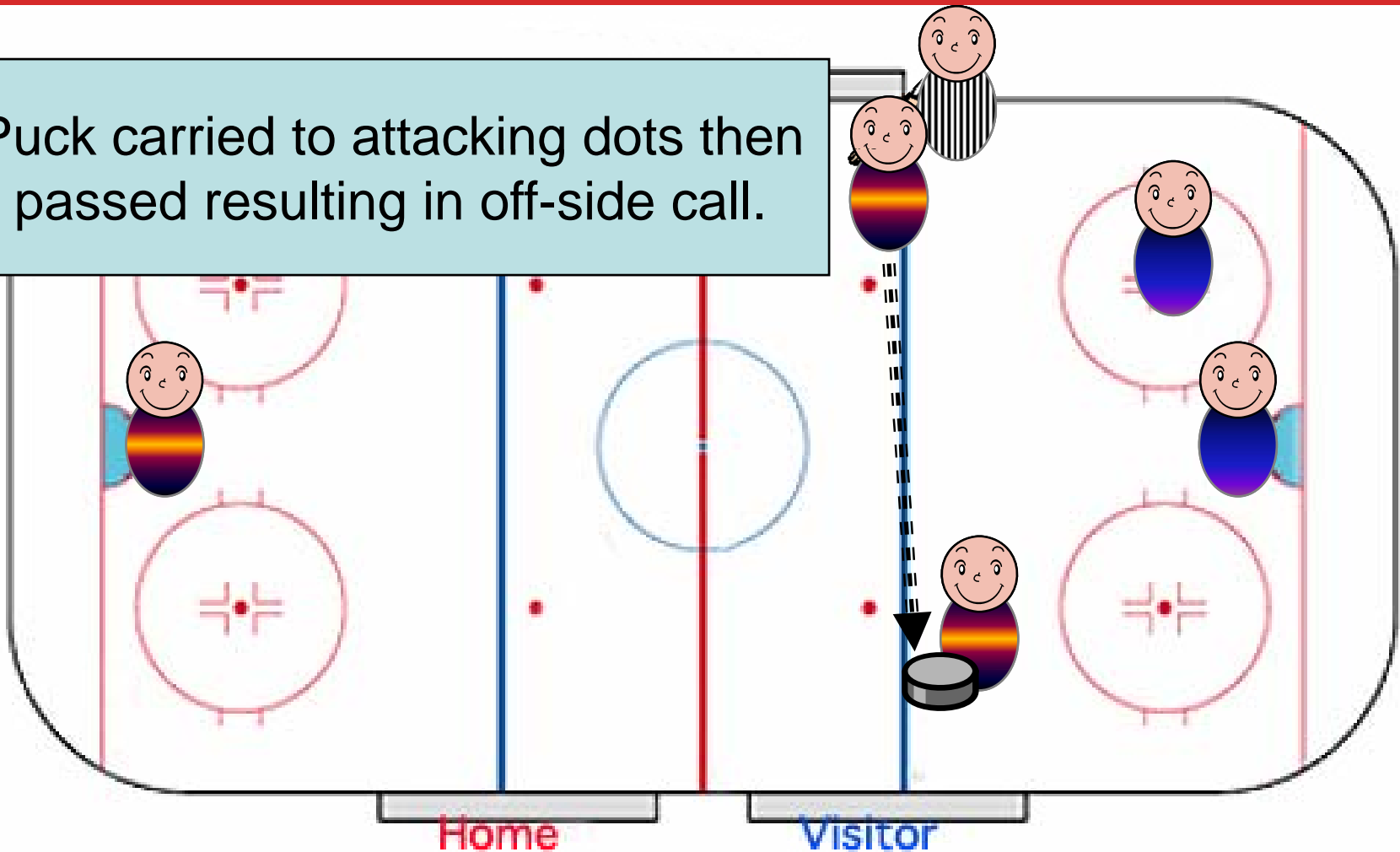


Neutral Zone Face-Off Locations

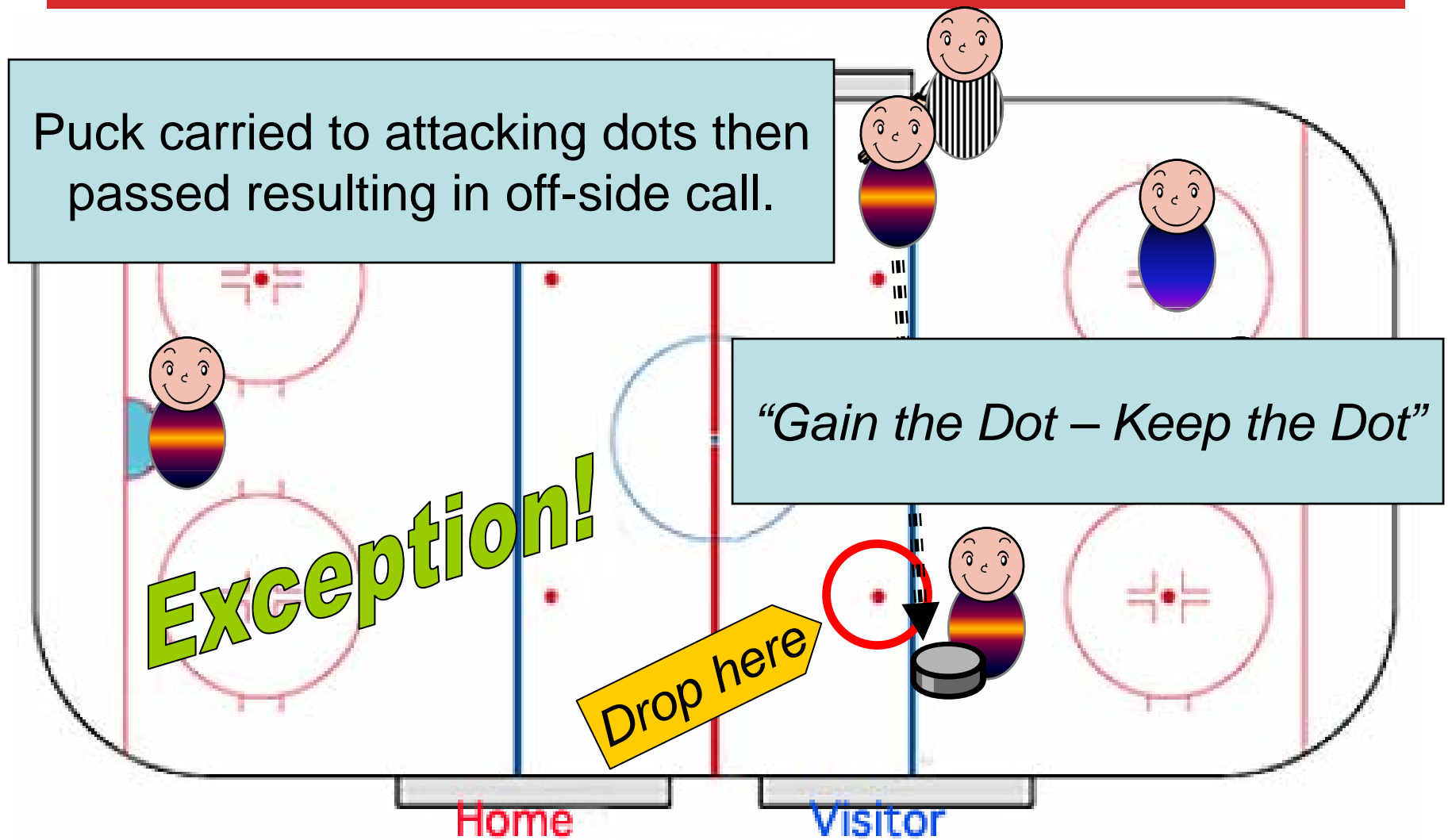


Neutral Zone Face-Off Locations

Puck carried to attacking dots then passed resulting in off-side call.



Neutral Zone Face-Off Locations





Face-Off Locations



*...When puck strikes an official
and goes out of bounds...*

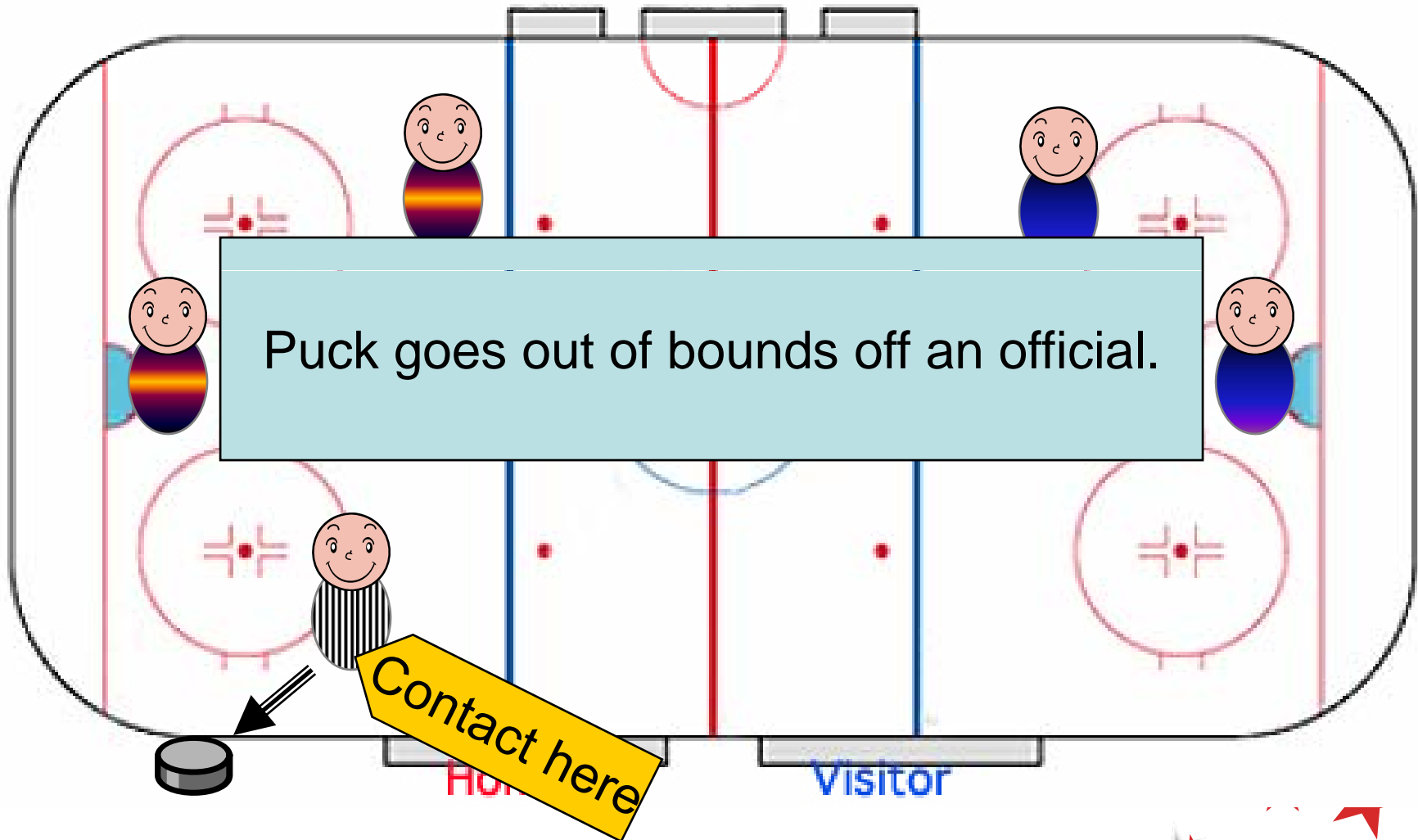


Face-Off Locations

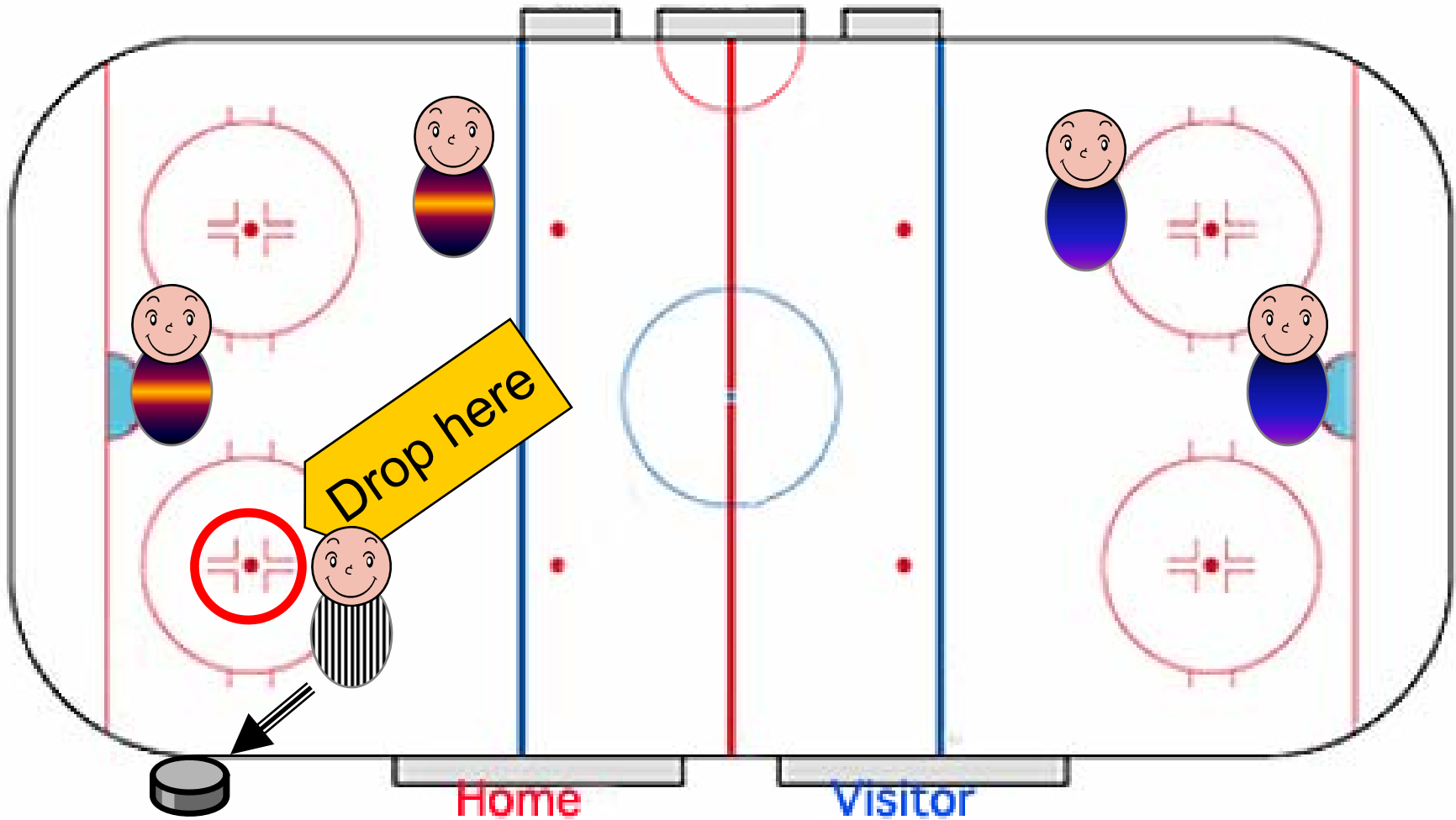
If the puck goes out of bounds off an official located in an **end** zone, the face-off occurs at the **end** zone face-off spot nearest to the place where the official was struck by the puck.



Face-Off Locations



Face-Off Locations

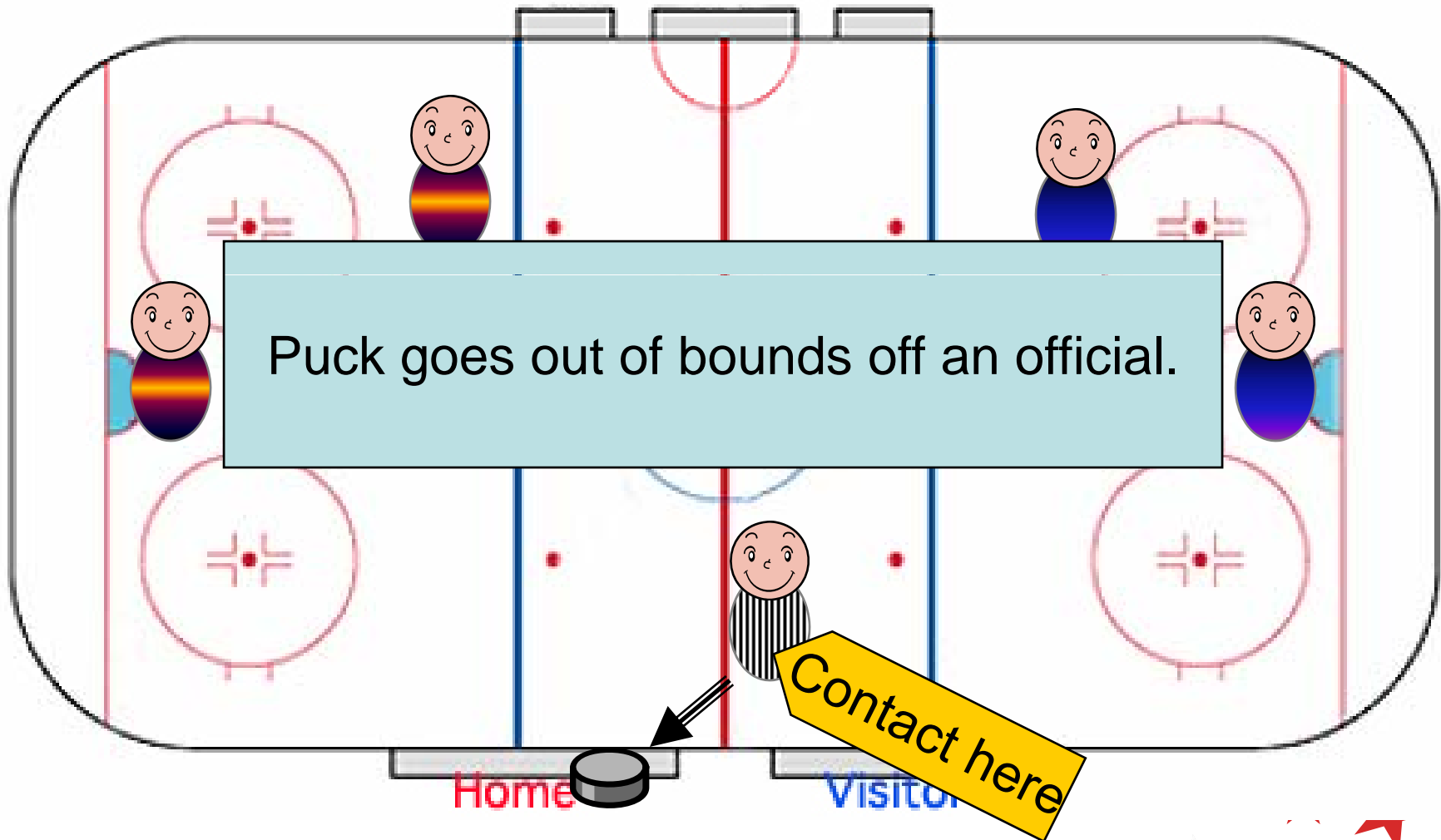


Face-Off Locations

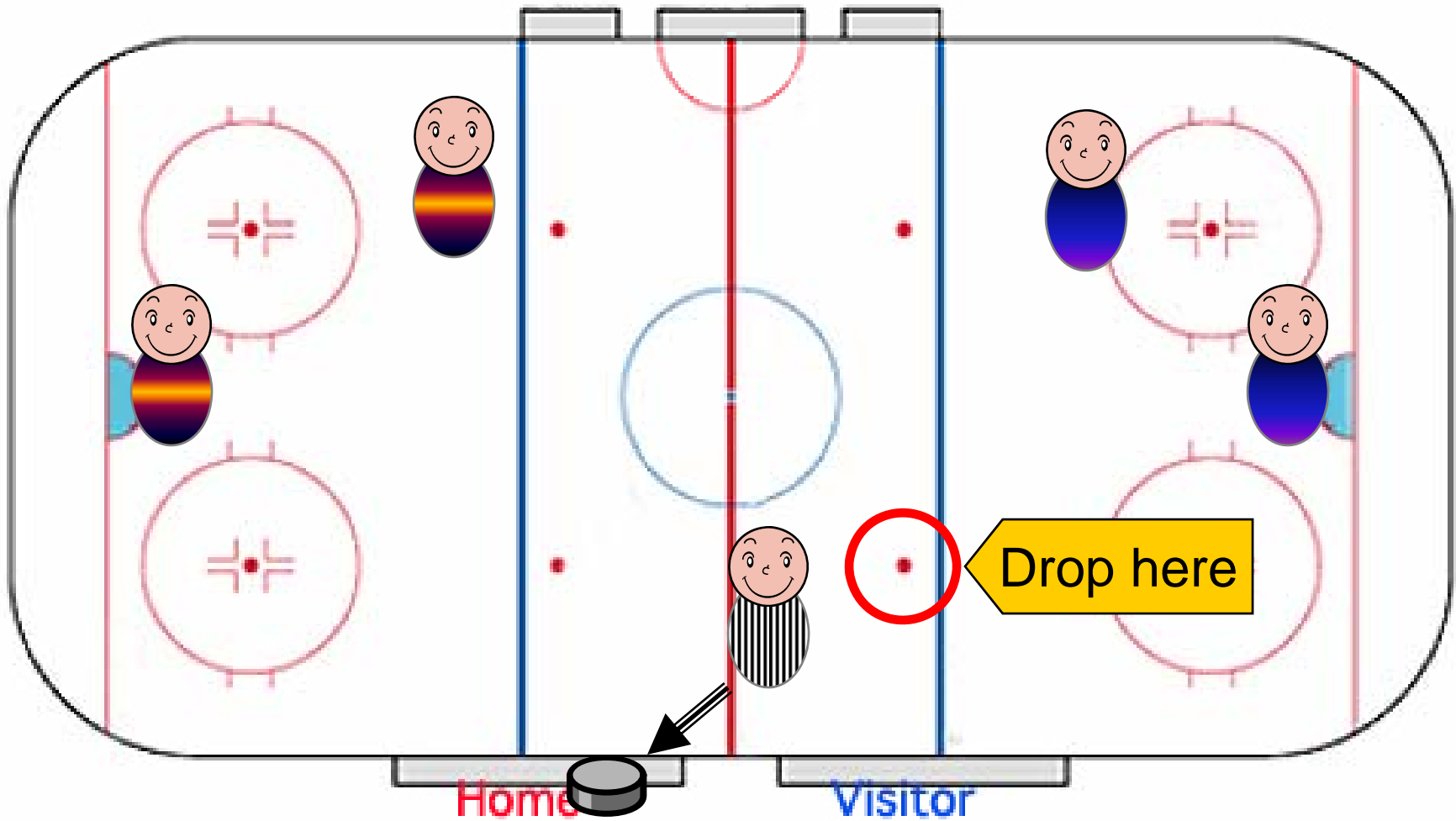
If the puck goes out of bounds off an official positioned in the **neutral** zone, the face-off occurs at the **neutral** zone face-off spot (excluding centre ice) nearest to the place where the official was struck by the puck.



Face-Off Locations



Face-Off Locations



Face-Offs

The End.



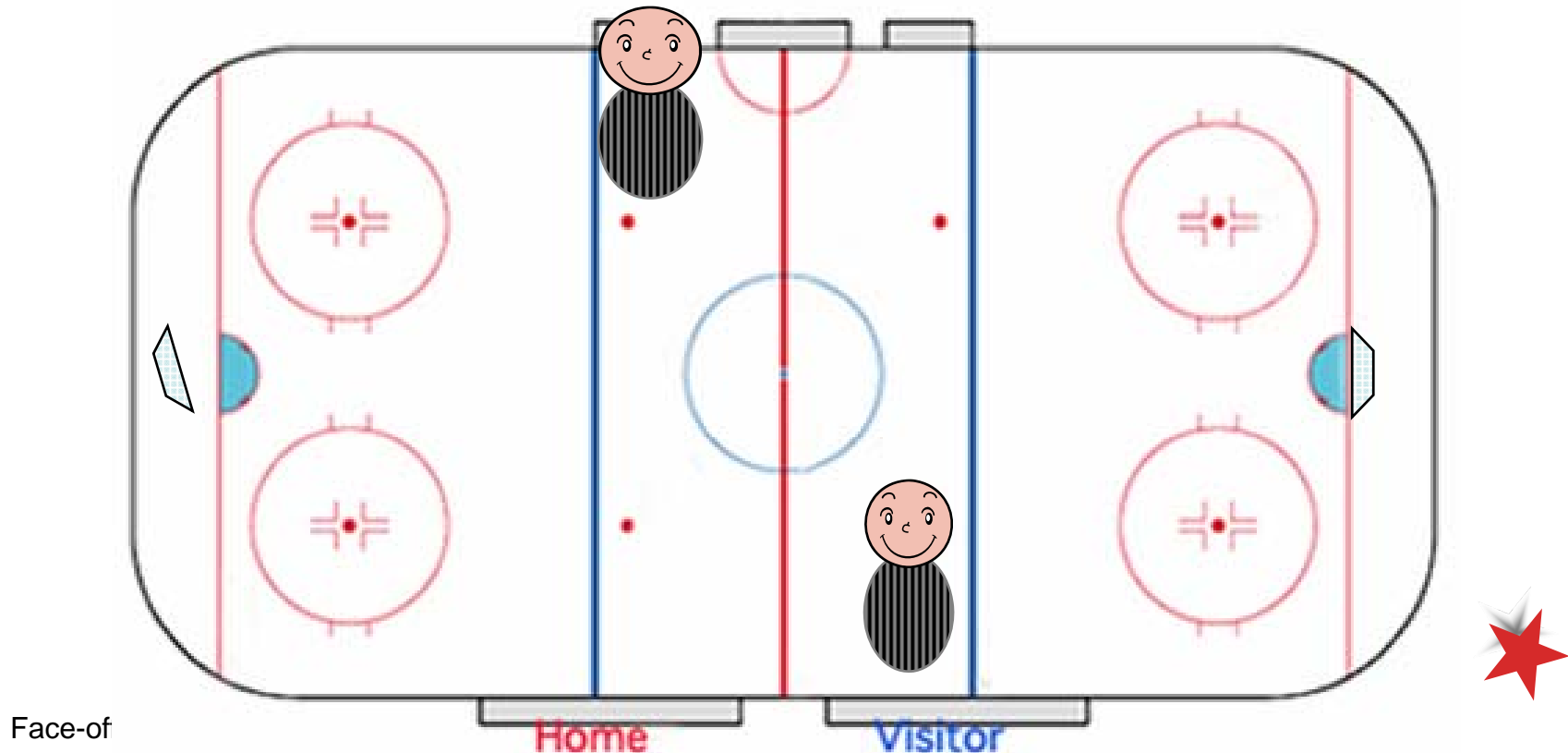


Face-off Location Quiz



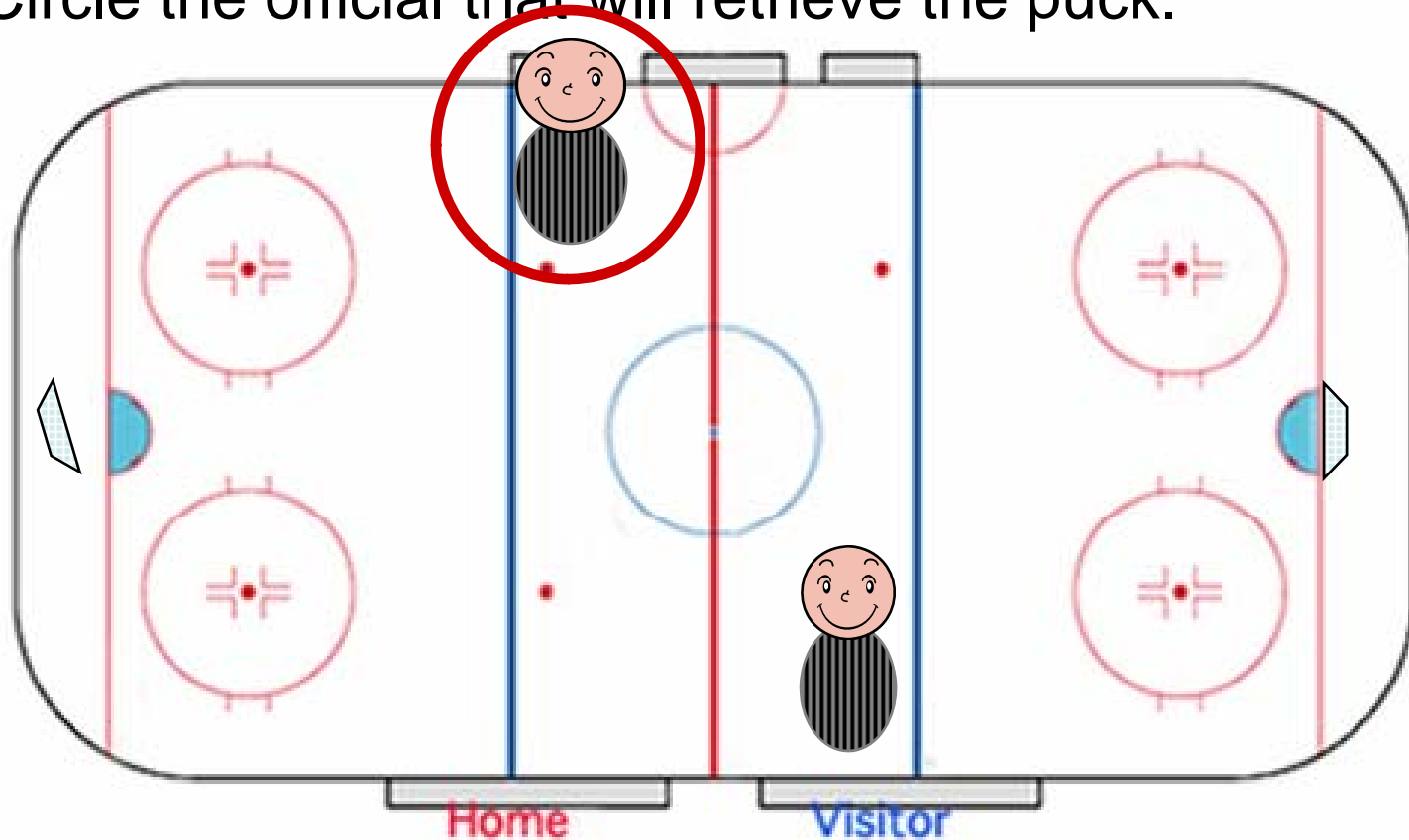
HCOP News Quiz

1. The 3 official system is in use. The Referee stops play when the net in “Big Linesman’s” end is dislodged. Circle the official that will retrieve the puck.



HCOP News Quiz

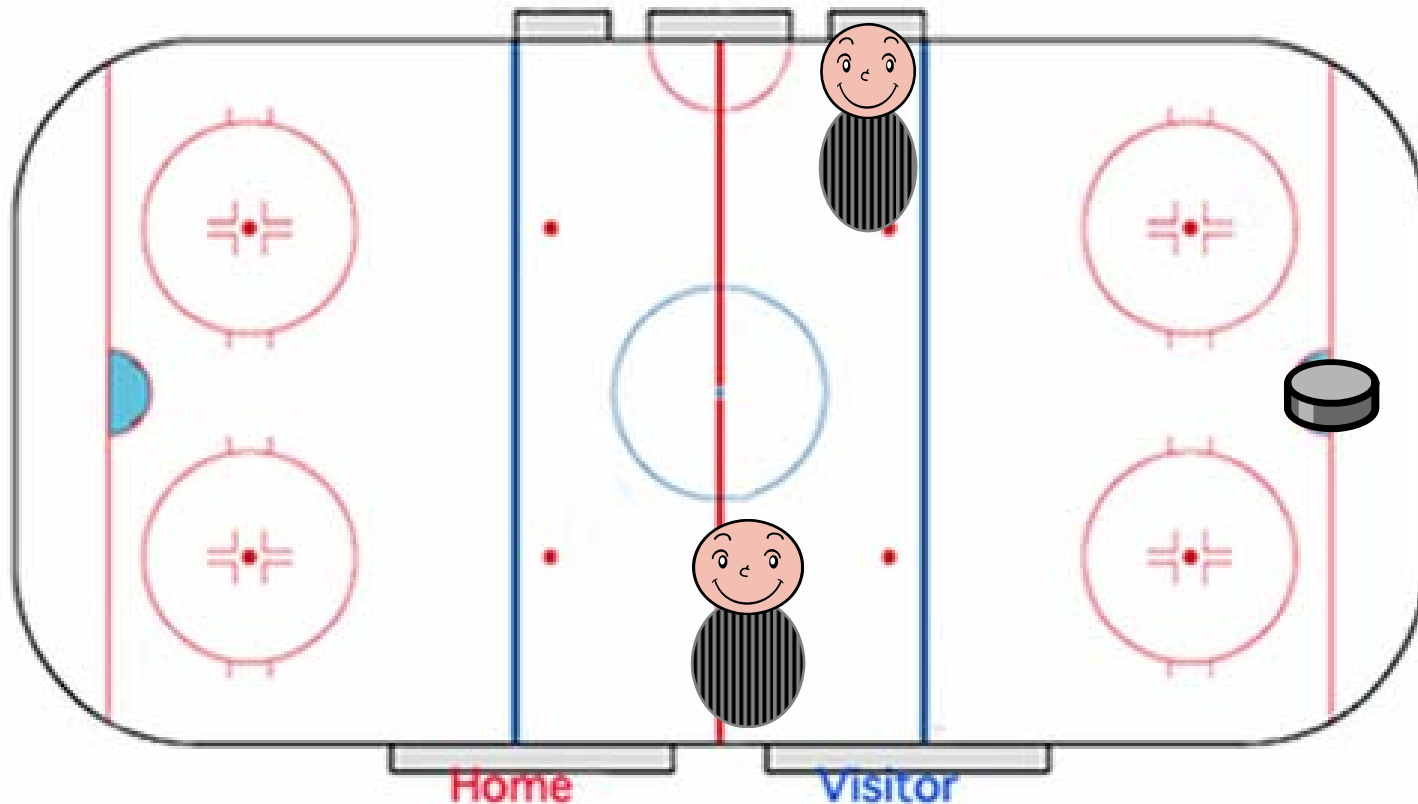
1. The 3 official system is in use. The Referee stops play when the net in “Big Linesman’s” end is dislodged. Circle the official that will retrieve the puck.



Face-of

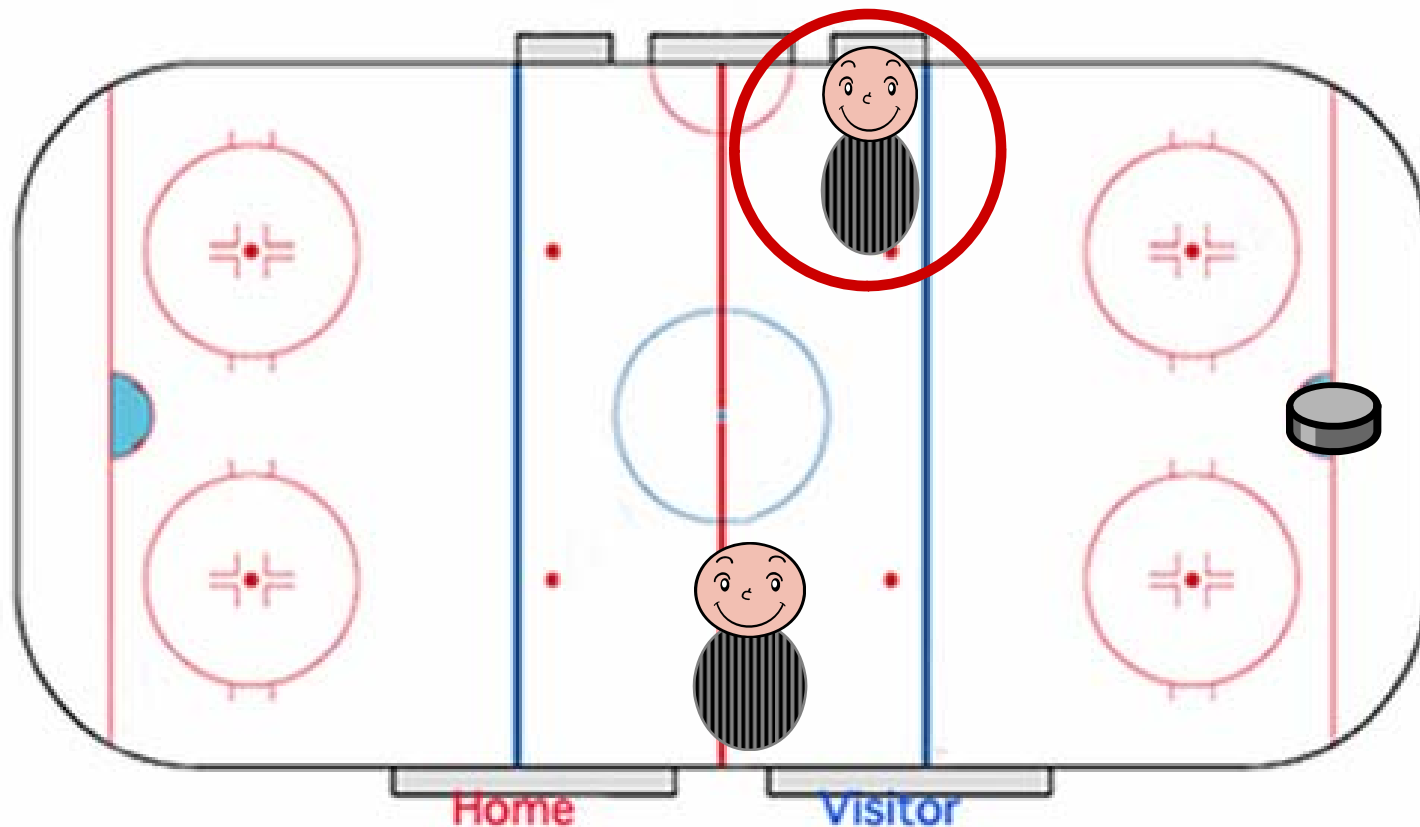
HCOP News Quiz

2. The 3 official system is in use. Circle the official that retrieves the puck after the goal is scored.



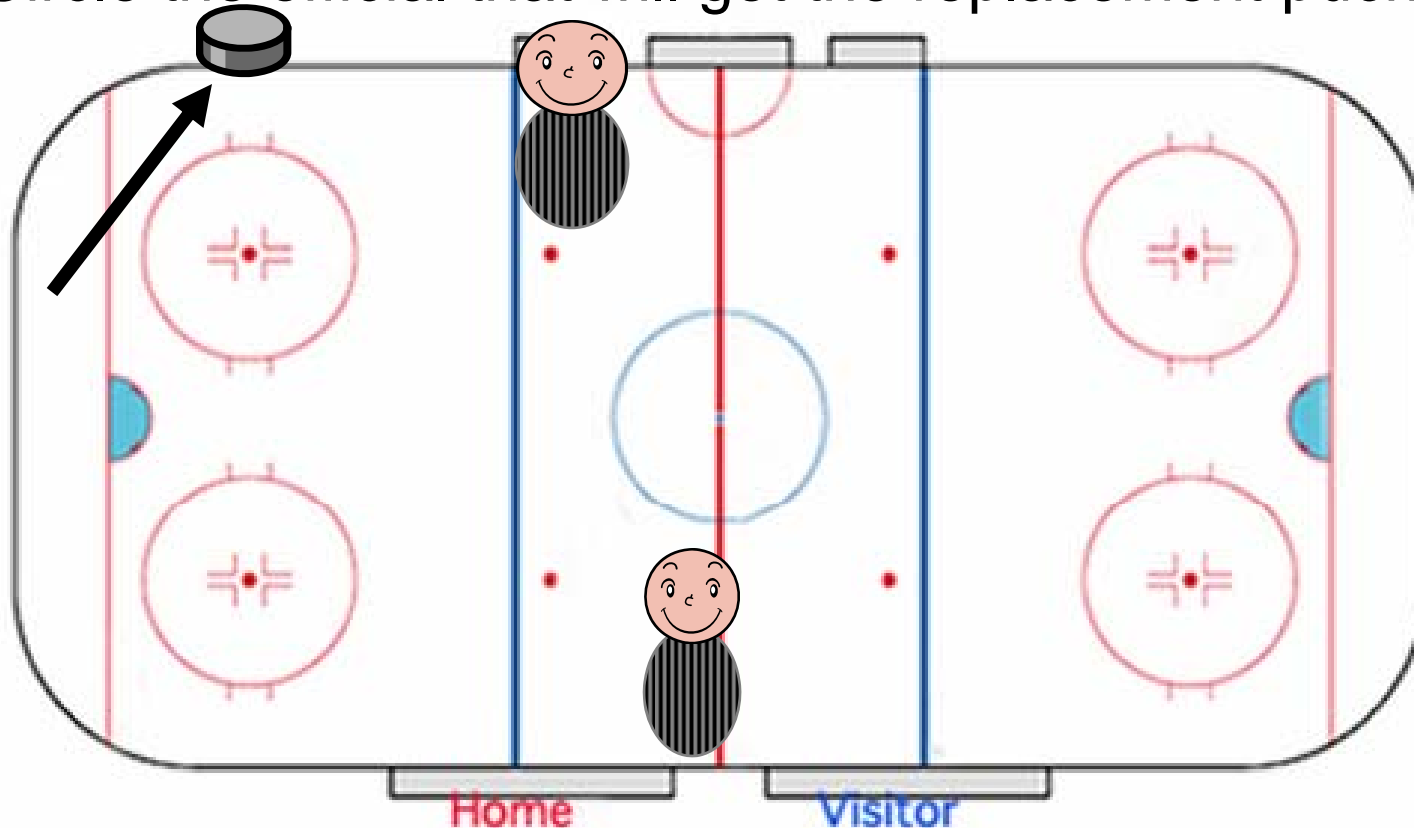
HCOP News Quiz

2. The 3 official system is in use. Circle the official that retrieves the puck after the goal is scored.



HCOP News Quiz

3. The 3 official system is in use. “Big Linesman” stops play when the puck goes out of bounds in his end. Circle the official that will get the replacement puck.

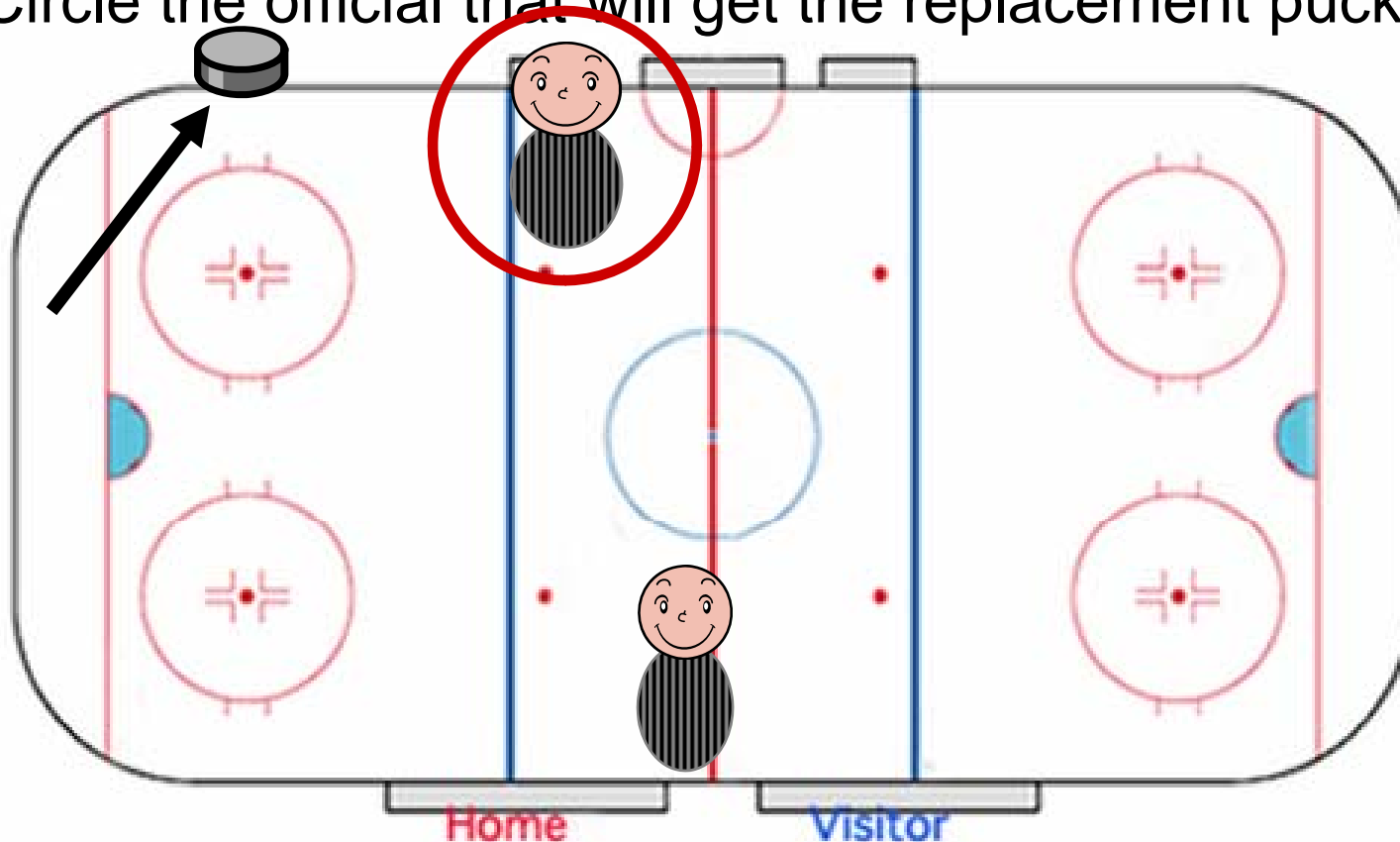


Face-of



HCOP News Quiz

3. The 3 official system is in use. “Big Linesman” stops play when the puck goes out of bounds in his end. Circle the official that will get the replacement puck.

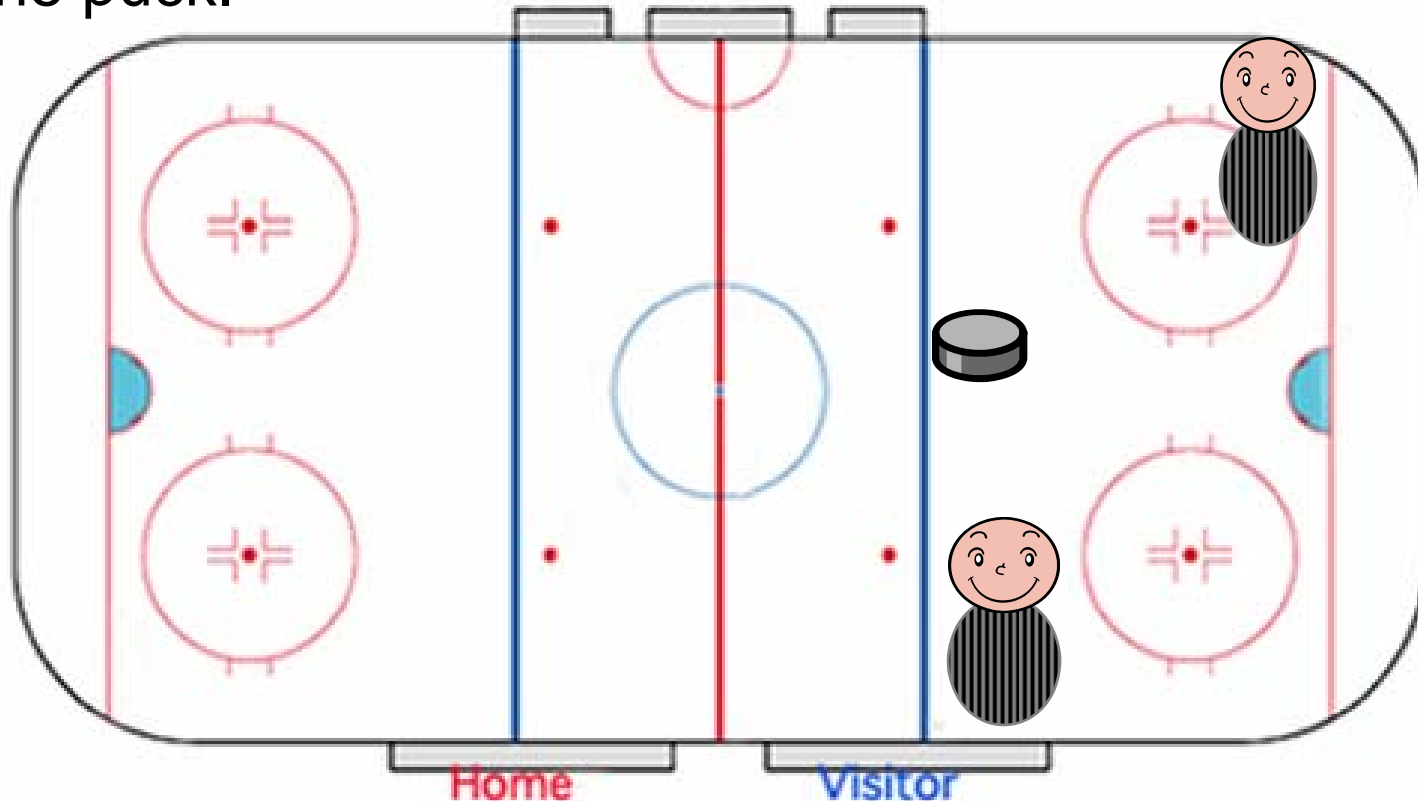


Face-of



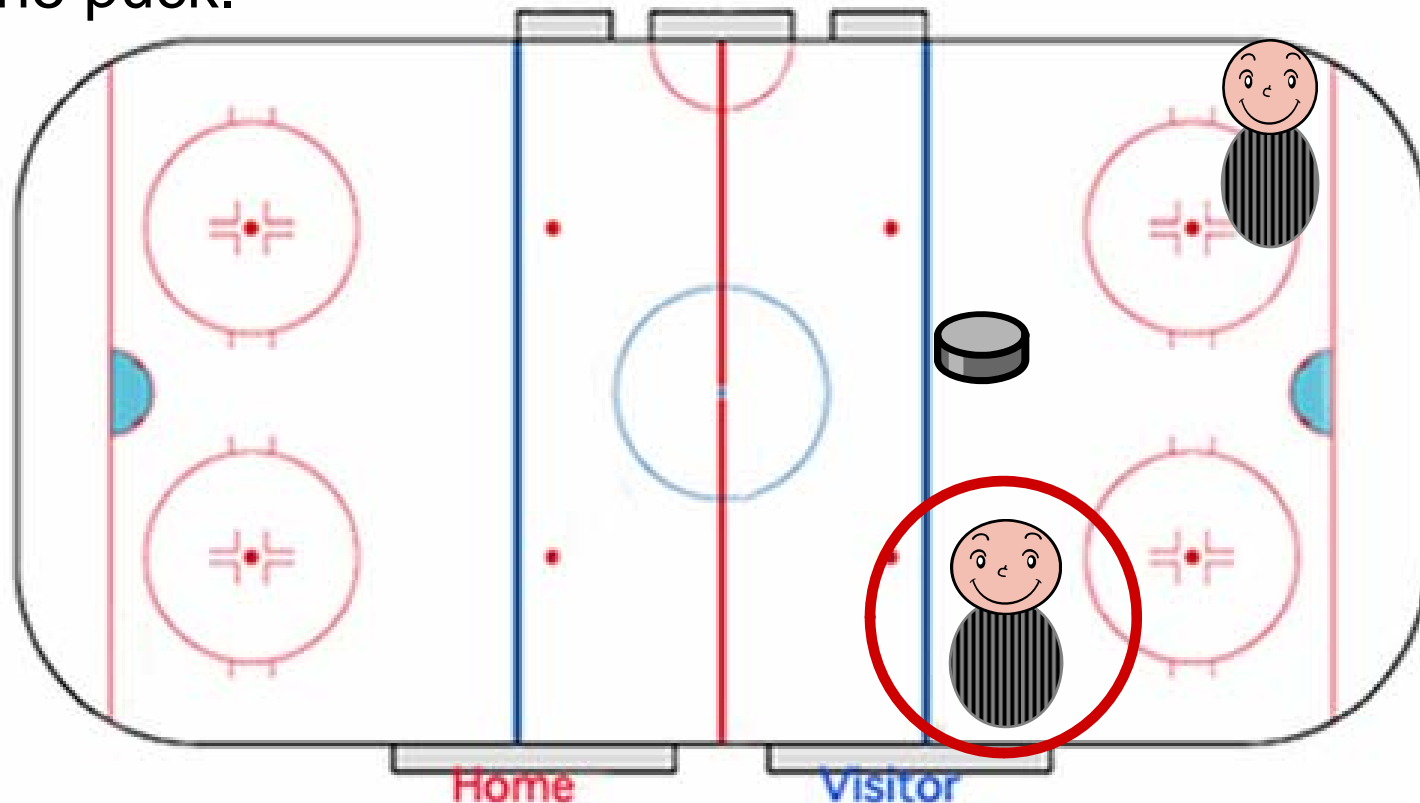
HCOP News Quiz

4. The 2 official system is in use. Off-side is called at the blue line by “Big Ref”. Circle the official that retrieves the puck.



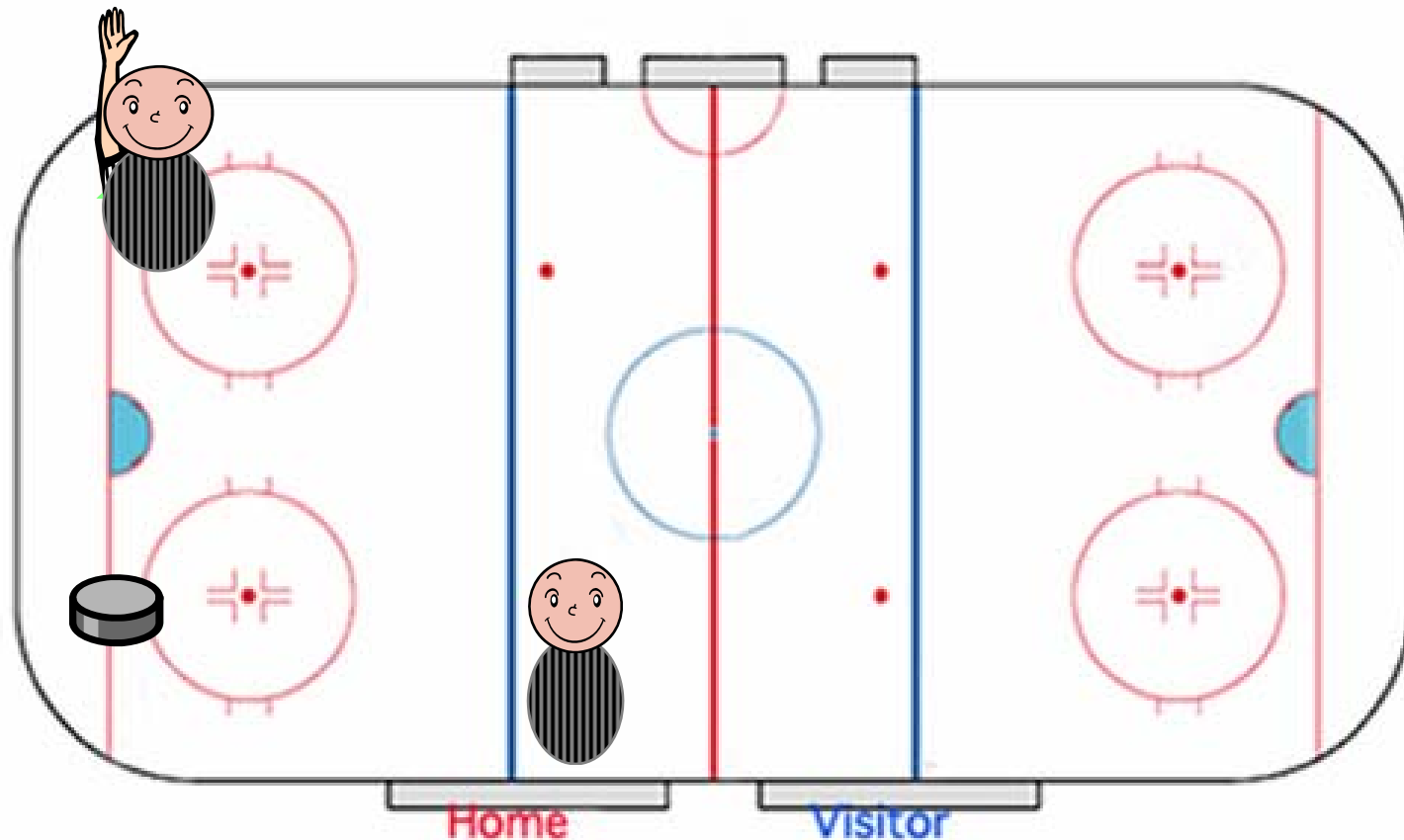
HCOP News Quiz

4. The 2 official system is in use. Off-side is called at the blue line by “Big Ref”. Circle the official that retrieves the puck.



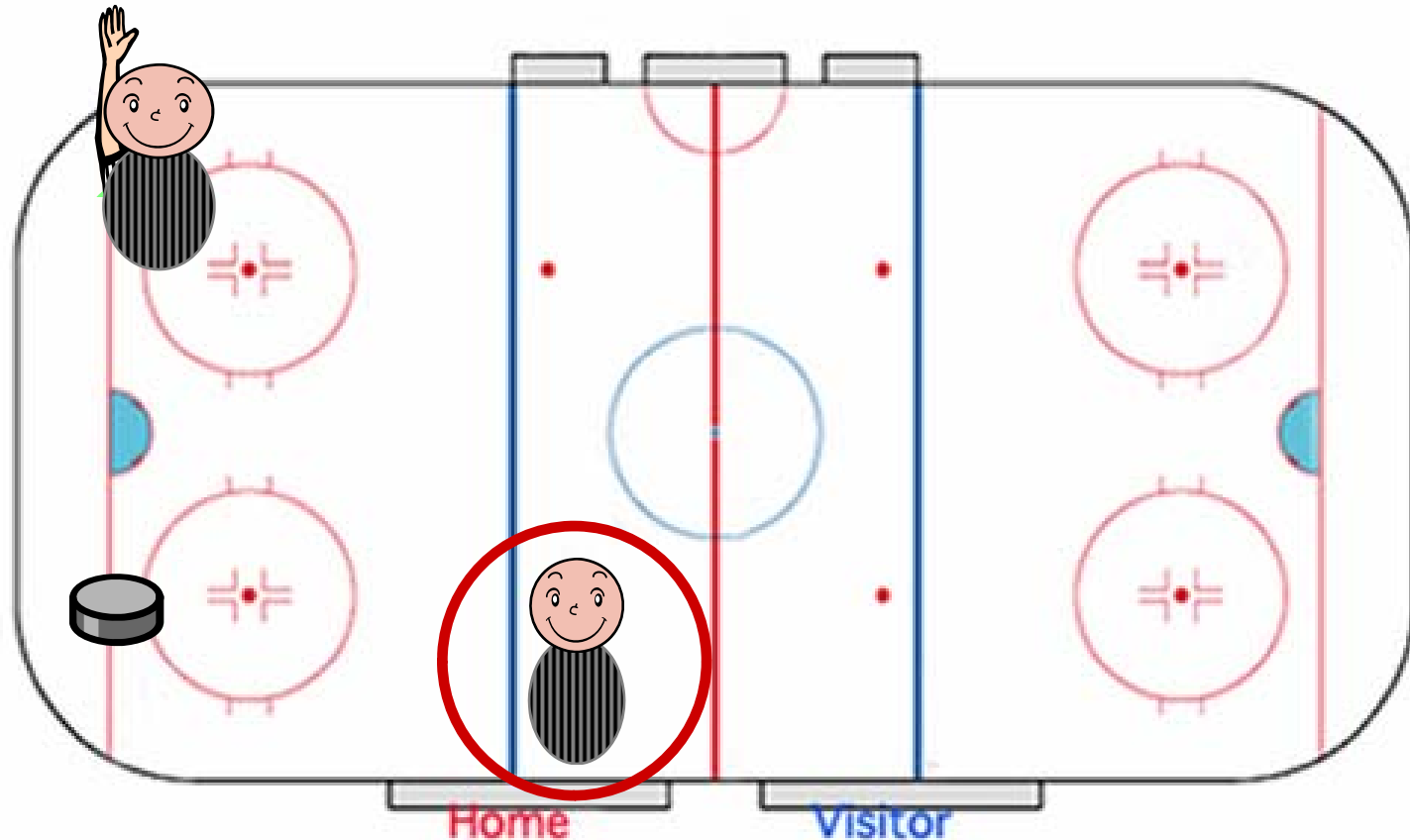
HCOP News Quiz

5. The 2 official system is in use. “Big Ref” calls a penalty. Circle the official that will conduct the ensuing face-off.



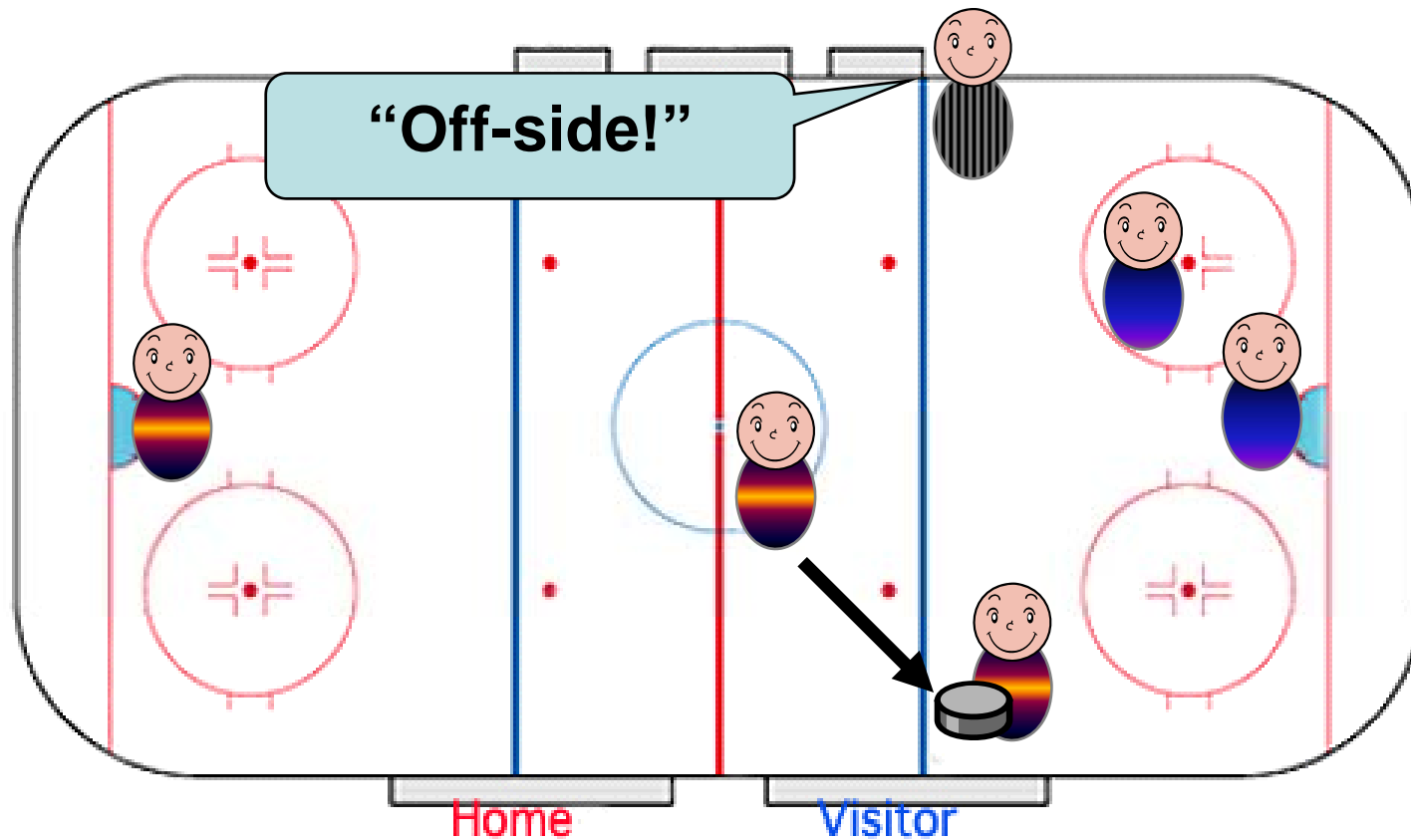
HCOP News Quiz

5. The 2 official system is in use. “Big Ref” calls a penalty. Circle the official that will conduct the ensuing face-off.



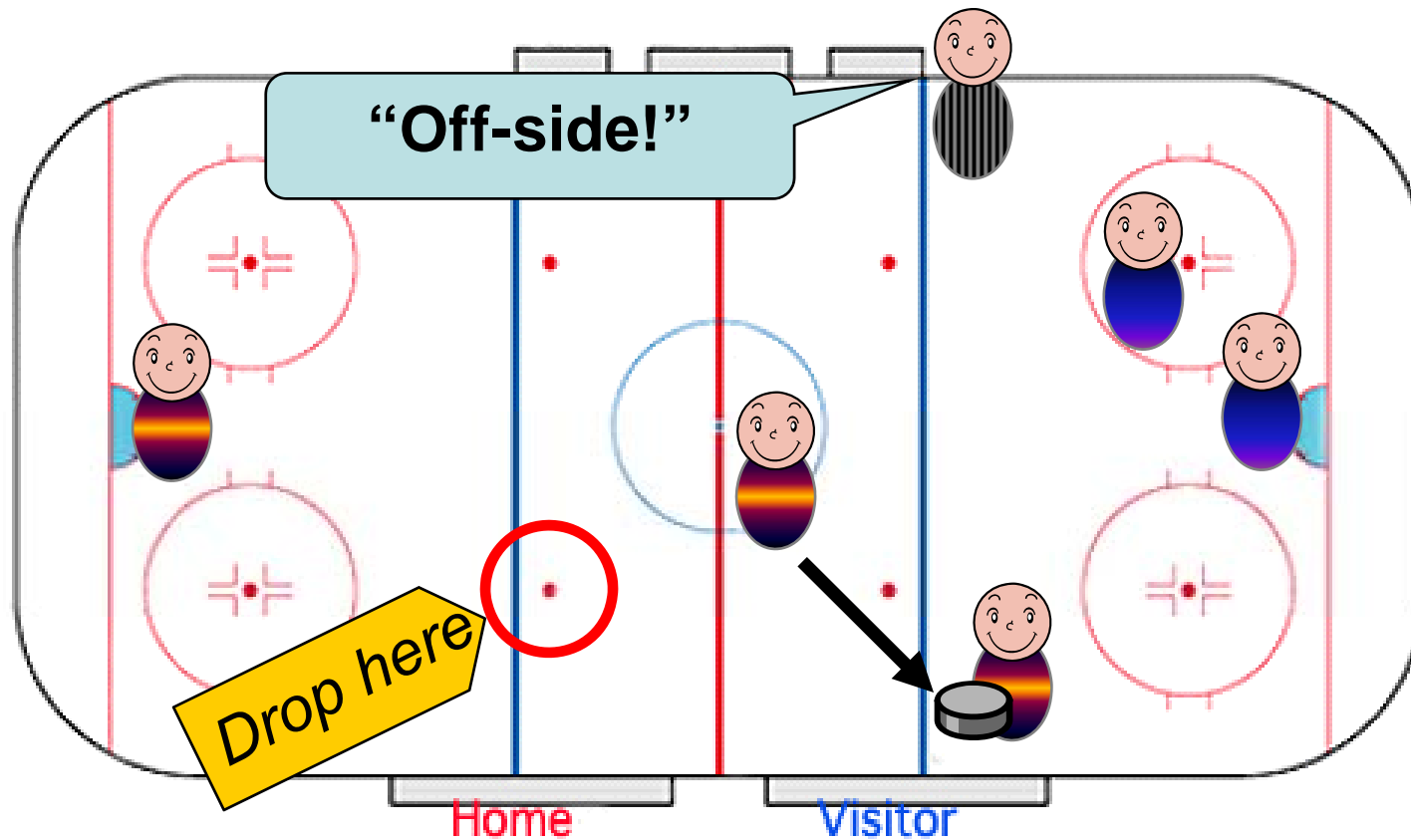
HCOP News Quiz

6. Circle the location of the ensuing face-off.



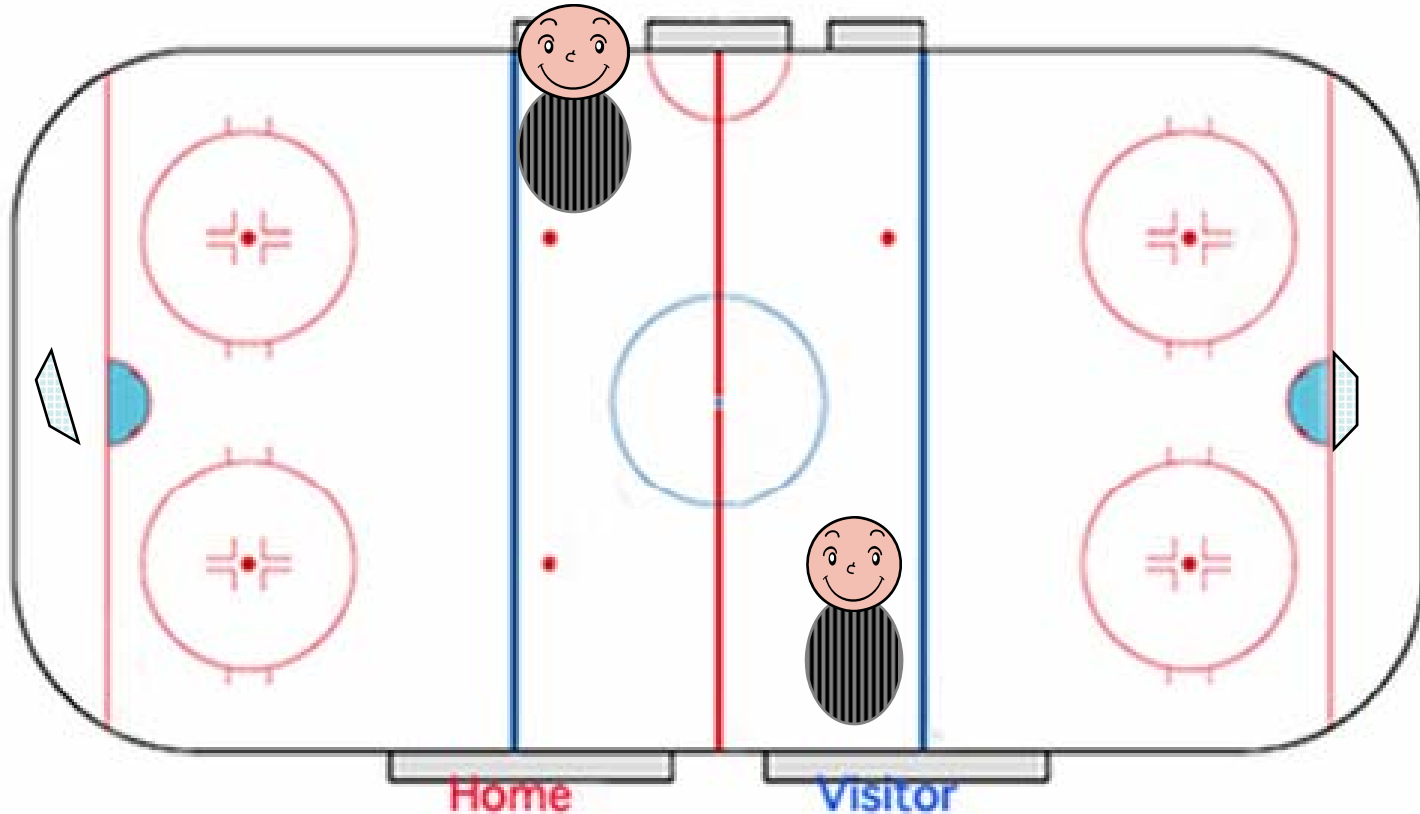
HCOP News Quiz

6. Circle the location of the ensuing face-off.



HCOP News Quiz

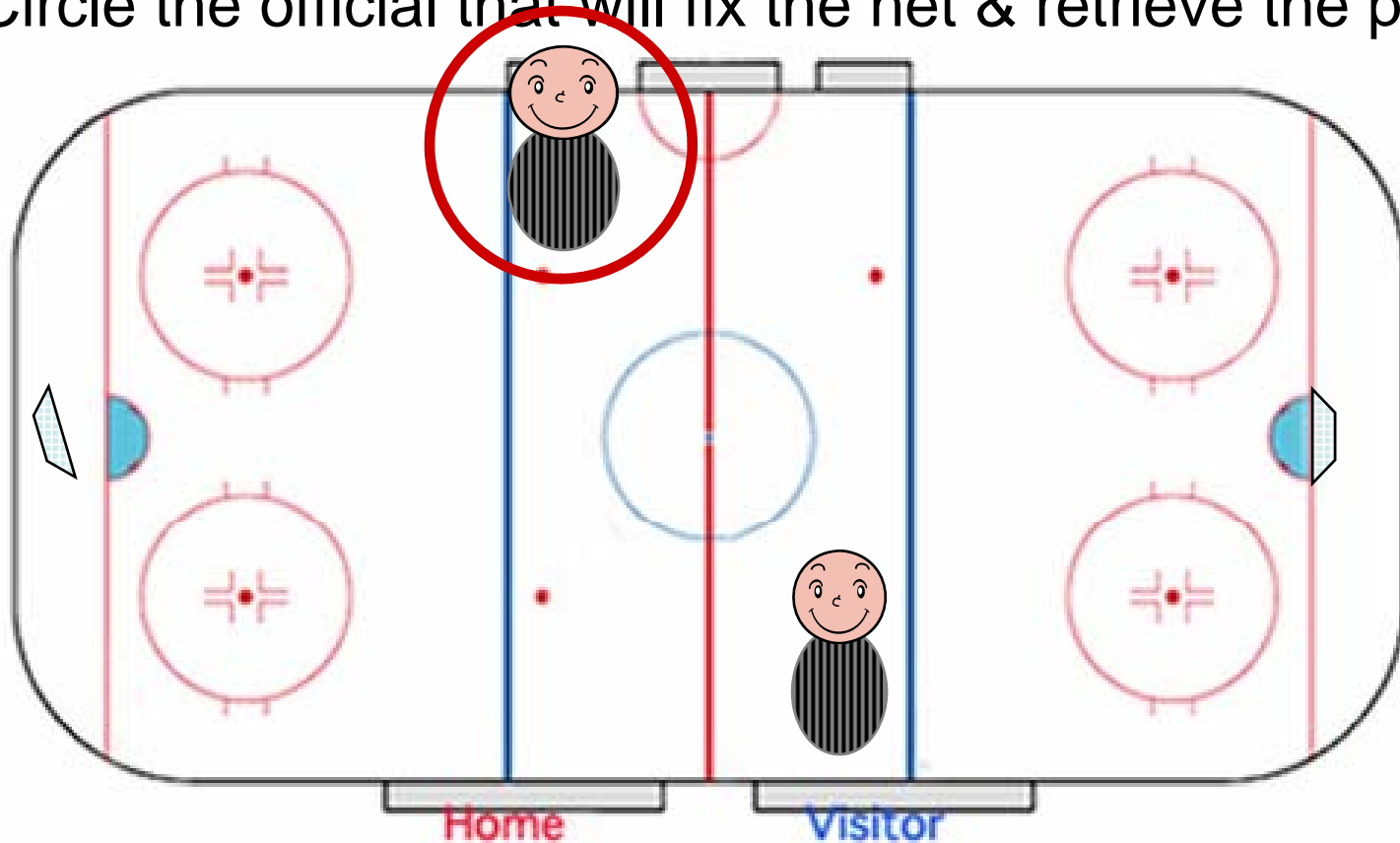
7. The 3 official system is in use. The Referee stops play when the net in “Big Linesman’s” end is dislodged. Circle the official that will fix the net & retrieve the puck.



Face-of

HCOP News Quiz

7. The 3 official system is in use. The Referee stops play when the net in “Big Linesman’s” end is dislodged. Circle the official that will fix the net & retrieve the puck.



Face-off



Face-Off Locations



*For more information contact
Steve Wallace
Technical Director of Officiating
Greater Toronto Hockey League
tdo@gthlcanada.com or (647)444-4845*

